

# WEBROOT®

an **opentext™** company

## Identity Shield User Guide



# Copyright

Copyright 2019 Webroot. All rights reserved.

*WSA Identity Shield User Guide*

Information in this document is subject to change without notice. The software described in this document is furnished under a license agreement or nondisclosure agreement. The software may be used or copied only in accordance with the terms of those agreements. No part of this publication may be reproduced, stored in a retrieval system, or transmitted in any form or any means electronic or mechanical, including photocopying and recording for any purpose other than the purchaser's personal use without the written permission of Webroot.





# Table of Contents

---

<b>Chapter 1: Identity Shield User Guide</b>	<b>1</b>
Identity Shield User Guide Overview	2
<b>Chapter 2: Getting Started With Identity Shield</b>	<b>3</b>
Installing Identity Shield	4
System Requirements for Windows	8
Operating Systems	8
RAM	8
Hard Disk Space	8
Internet/Browser	8
Using Identity Shield	9
Changing Protection Levels	10
Responding to Alerts	13
Changing Basic Configuration Settings	14
<b>Chapter 3: Managing Identity Protection</b>	<b>24</b>
Changing Identity Shield Settings	25
Managing Protected Applications	29
Managing Protected Websites	42
Disabling Identity Shield	50
<b>Chapter 4: Managing Your Account</b>	<b>58</b>
Viewing Your Account Details	59
Shutting Down Identity Shield	66
Uninstalling Identity Shield	69
Upgrading to a Threat Removal Version	70
<b>Chapter 5: Identity Shield Support</b>	<b>72</b>
Accessing Technical Support	73
<b>Index</b>	<b>i</b>



# Chapter 1: Identity Shield User Guide

To get started using the Identity Shield User Guide, see the following topic:

---

<b>Identity Shield User Guide Overview .....</b>	<b>2</b>
--	----------

---

## Identity Shield User Guide Overview

Webroot® Identity Shield provides safe Internet browsing and data protection. As you perform online transactions, it watches for Trojans or phishing sites that try to steal personal data – including user names, passwords, security codes, account numbers, and credit card numbers.

Identity Shield blocks any attempts to gain personal information, so you can rest assured that the details you provide on a website are always secure.

Two versions of Identity Shield are available:

- **Identity protection only** – Blocks threats that try to steal information during your online activity.
  - **Identity protection, plus threat detection** – In addition to protecting your online activity, this version scans for threats on your computer. If you want to be able to remove threats, you must upgrade to a full version of Webroot SecureAnywhere. For more information, see [\*Upgrading to a Threat Removal Version on page 70.\*](#)
-

## Chapter 2: Getting Started With Identity Shield

To get started using Identity Shield, see the following topics:

---

<b>Installing Identity Shield</b> .....	<b>4</b>
<b>System Requirements for Windows</b> .....	<b>8</b>
Operating Systems .....	8
RAM .....	8
Hard Disk Space .....	8
Internet/Browser .....	8
<b>Using Identity Shield</b> .....	<b>9</b>
<b>Changing Protection Levels</b> .....	<b>10</b>
<b>Responding to Alerts</b> .....	<b>13</b>
<b>Changing Basic Configuration Settings</b> .....	<b>14</b>

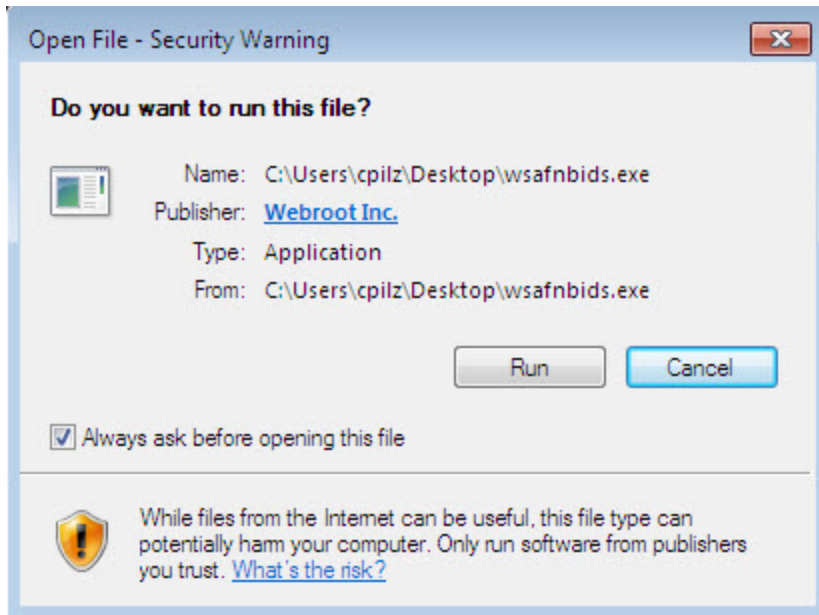
---

## Installing Identity Shield

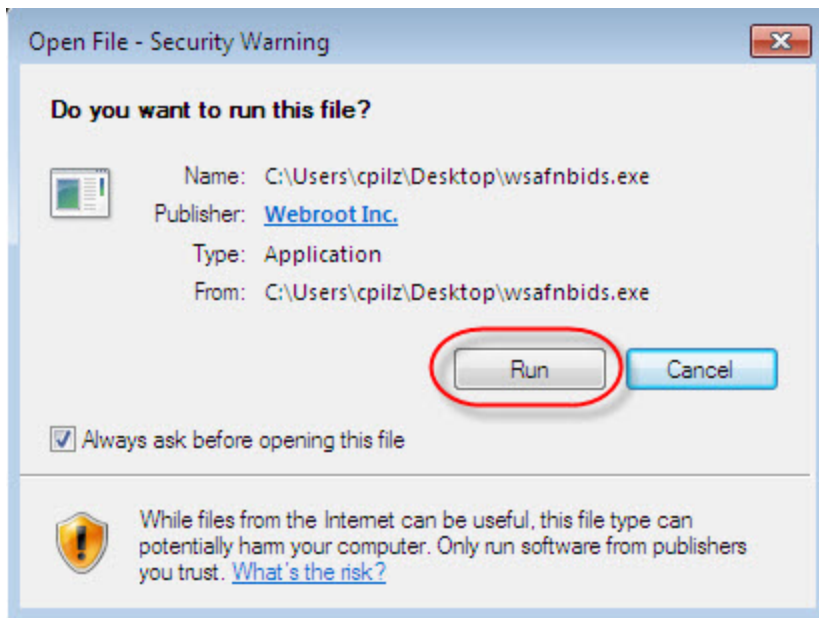
You can install Identity Shield on a PC with one of the following operating systems and browsers:

### To install Identity Shield:

1. Your banking institution provides a login link to the Webroot Identity Shield. Click the **Webroot** download link, available when you log into your banking account. The installation window displays.



2. Click the **Run** button.



The following dialog displays.



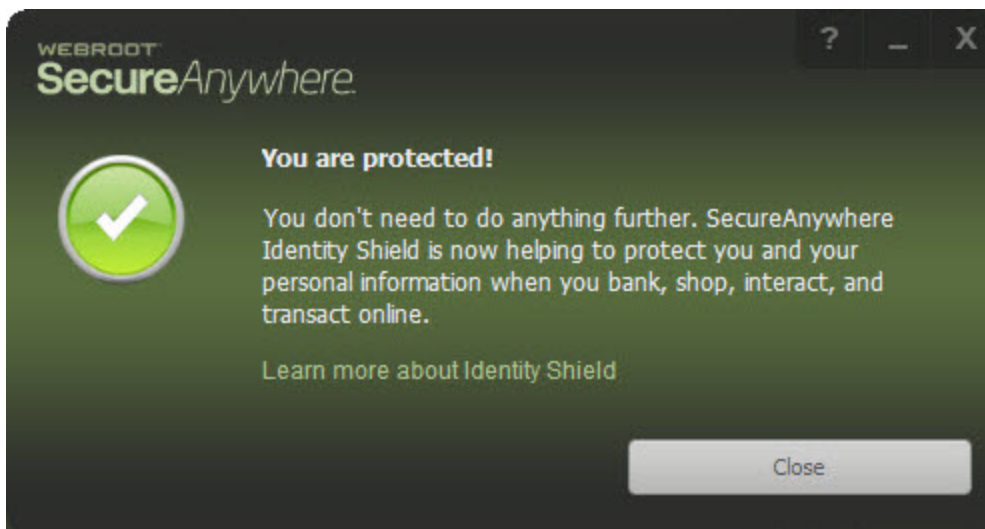
3. In the middle field, enter the keycode provided by your banking institution. If you don't see a field in the middle of the dialog, your version does not require a keycode.

4. In the upper right corner, click the **Advanced Settings** link to modify any of the following settings.

OPTION	DESCRIPTION
<b>Create a shortcut to SecureAnywhere on the desktop</b>	Places an Identity Shield shortcut icon on your Windows Desktop.
<b>Randomize the installed filename to bypass certain infections</b>	Changes the Webroot installation filename to a random name, for example, QrXC251G.exe, which prevents malware from detecting and blocking Webroot's installation file.
<b>Protect the SecureAnywhere files, processes, and memory from modification</b>	Enables self-protection and CAPTCHA prompts. CAPTCHA requires you to read distorted text on the screen and enter the text in a field before performing any critical actions.
<b>Change Language</b>	<p>Changes the default display language.</p> <p>To change the language displayed in Identity Shield, click the <b>Change Language</b> button and select from the supported languages. You can only change the displayed language during installation, not after.</p>



5. Click the **Agree and Install** button. Identity Shield installs in a few seconds.



6. When you're done, to verify that Identity Shield is running, look for the Webroot icon in your system tray.



Identity Shield runs in the background to automatically protect your online activities. You do not need to manually start Identity Shield protection, nor do you need to shut it down.

---

## System Requirements for Windows

The following describes the system requirements for using Identity Shield functionality on Windows.

### Operating Systems

- Windows 10 (32-bit and 64-bit).
- Windows 8 and 8.1 (32-bit and 64-bit).
- Windows 7 (32-bit and 64-bit), Windows 7 SP1 (32-bit and 64-bit ).

### RAM

- Intel Pentium®/Celeron® family, or AMD® K6™/Athlon®/AMD Duron™ family, or other compatible processor.
- 128 MB RAM (minimum).
- 2 GB RAM recommended (minimum).

### Hard Disk Space

- 15 MB

### Internet/Browser

Internet access is required:

- Internet Explorer® 11.0 and higher (32-bit and 64-bit).
  - Mozilla Firefox® (32-bit and 64-bit); current and most recent versions.
  - Google Chrome® (32-bit and 64-bit); current and most recent versions.
-

## Using Identity Shield

After you install Identity Shield, it works silently in the background to protect your browsing activity. Identity Shield will not slow down your computer or interrupt normal operations.

If Identity Shield detects suspicious activity, it performs one of the following actions:

- Blocks malicious programs on websites, which try to steal your login credentials and other personal data.
- Displays an alert if you try to access a phishing website or if malware tries to re-direct you to a malicious website. For more information, see [Responding to Alerts on page 13](#).
- Prevents malware from reading or copying your information on a website.

Webroot has configured Identity Shield for you. You do not need to change its settings or perform any tasks yourself. However, if you are an advanced user, you can display the main interface and adjust protection levels. For more information, see [Changing Protection Levels on page 10](#).

Identity Shield cannot remove malware already installed on your computer. To fully protect your computer, you should upgrade to one of the following Webroot SecureAnywhere versions:

- [AntiVirus](#)
  - [Internet Security Plus](#)
  - [Complete](#)
  - For more information, see [Upgrading to a Threat Removal Version on page 70](#).
-

## Changing Protection Levels

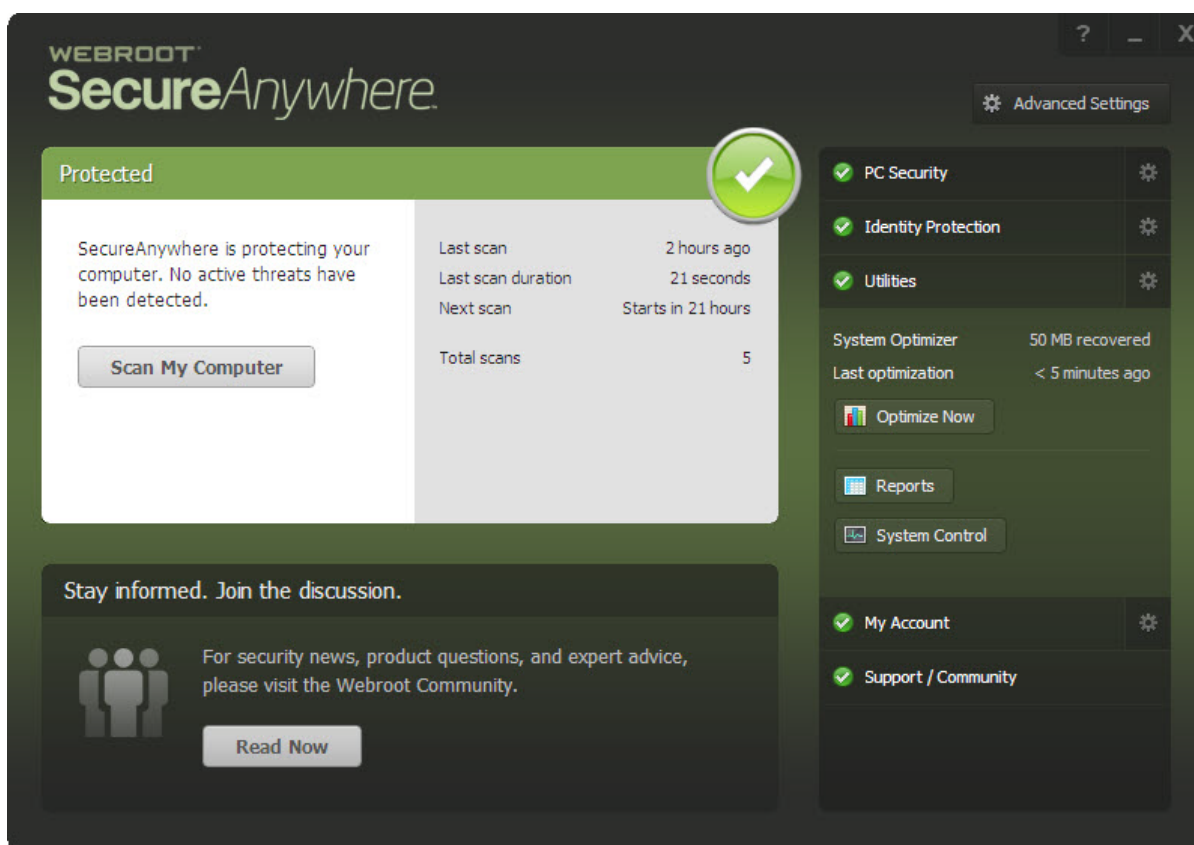
The main interface for Identity Shield provides access to all functions and settings.

### To change protection levels:

1. From the system tray, double-click the **Webroot** icon.



The main interface displays.



The following are the areas and links can take you to different parts of the system.

AREA	DESCRIPTION
<b>Main Interface</b>	View your system status.
<b>PC Security</b>	<p>Run support tools.</p> <p>If you have the threat-detection version, additional options are available to scan for threats.</p> <p>For instructions on scanning, see <a href="#">Running Scans</a> in the <a href="#">WSA PC User Guide</a>.</p> <p>To remove threats, you must upgrade to a full version of Webroot SecureAnywhere. For more information, see <a href="#">Upgrading to a Threat Removal Version on page 70</a>.</p>
<b>Identity Protection</b>	<p>Adjust Identity Protection settings.</p> <p>For more information, see <a href="#">Managing Identity Protection</a> in the <a href="#">WSA PC User Guide</a>.</p>
<b>Utilities</b>	<p>Use tools to:</p> <ul style="list-style-type: none"> <li>• Manage processes and files</li> <li>• Generate and view reports</li> <li>• Submit files to Webroot Support</li> </ul> <p>For more information about system tools, see <i>Webroot SecureAnywhere PC User Guide</i>.</p>

AREA	DESCRIPTION
<b>My Account</b>	<p>View your account information and upgrade your subscription to include threat removal.</p> <p>For more information, see <a href="#">Viewing Your Account Details on page 59</a>.</p>
<b>Support Community</b>	<p>Provides access to the online Webroot community.</p> <p>For more information, see <a href="#">Accessing Technical Support on page 73</a>.</p>

---

## Responding to Alerts

Identity Shield blocks known phishing sites. If it detects a suspicious site, it displays an alert similar to the following example.

If this alert displays, you must decide whether or not to continue. Do either of the following:

- If you aren't sure what to do, we recommend that you click the **Close** button.
  - If you are absolutely sure the website is legitimate and not a phishing site, click the **Allow** button.
-

## Changing Basic Configuration Settings

Webroot has preconfigured the Identity Shield with our recommended settings. We recommend that you keep Webroot's default settings, however, you can modify these settings to change the behavior of the program.

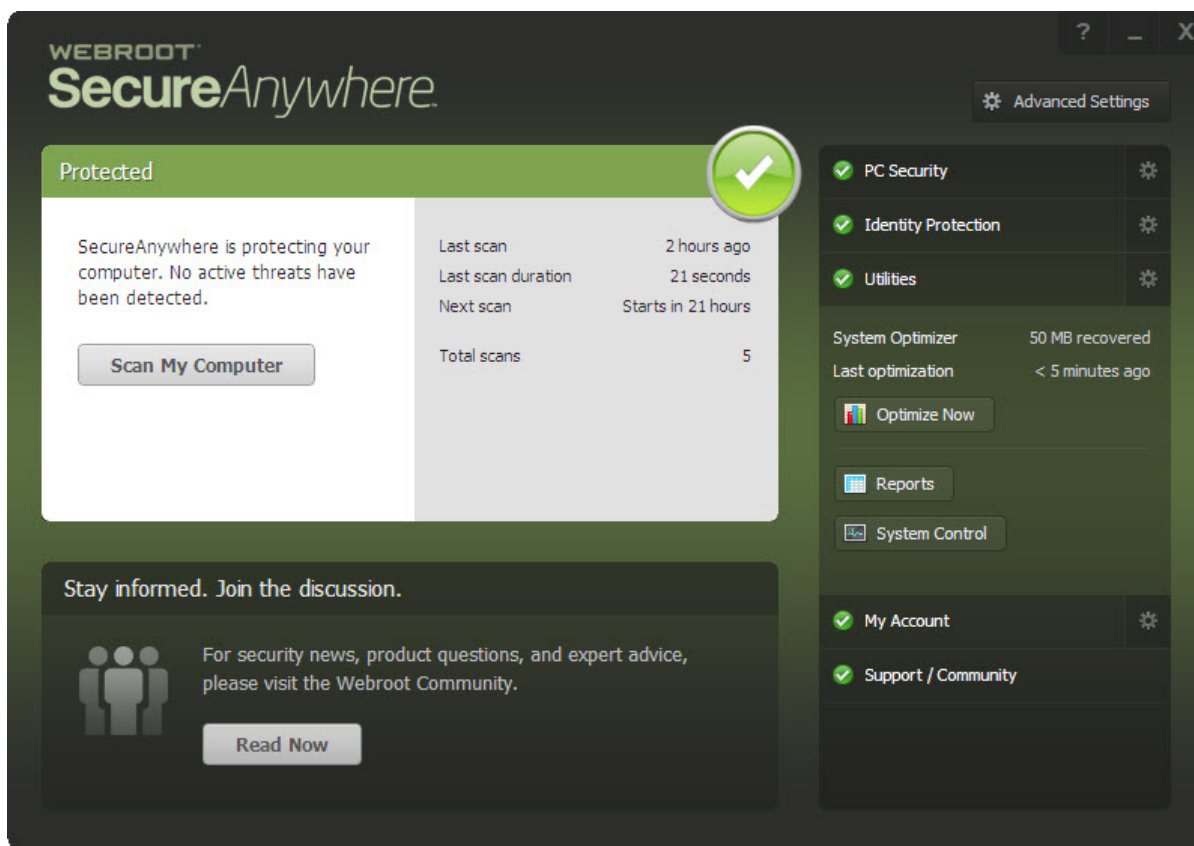
This page describes basic configuration. For information about other program settings, see [Changing Shield Settings](#) in the [WSA PC User Guide](#).

### To change basic configuration settings:

1. In the system tray, double-click the **Webroot** icon to display the main interface.

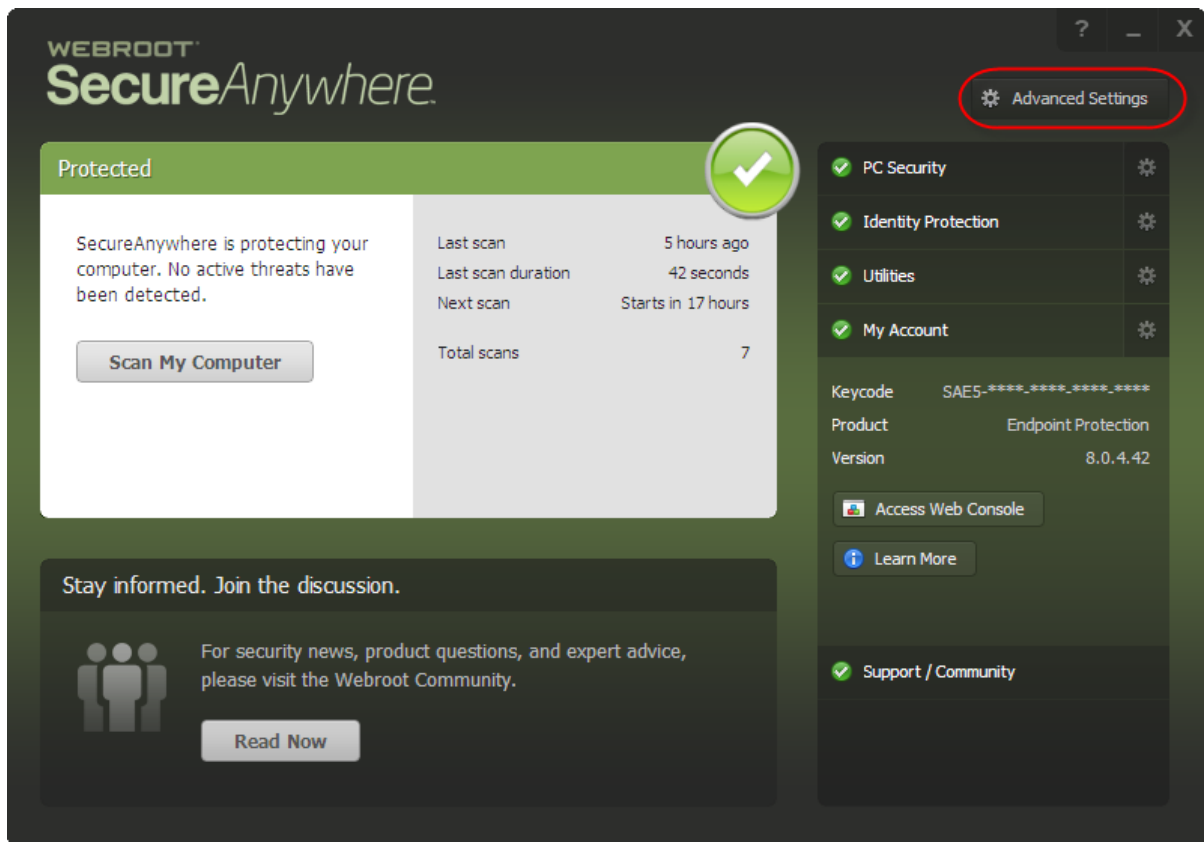


The main interface displays.

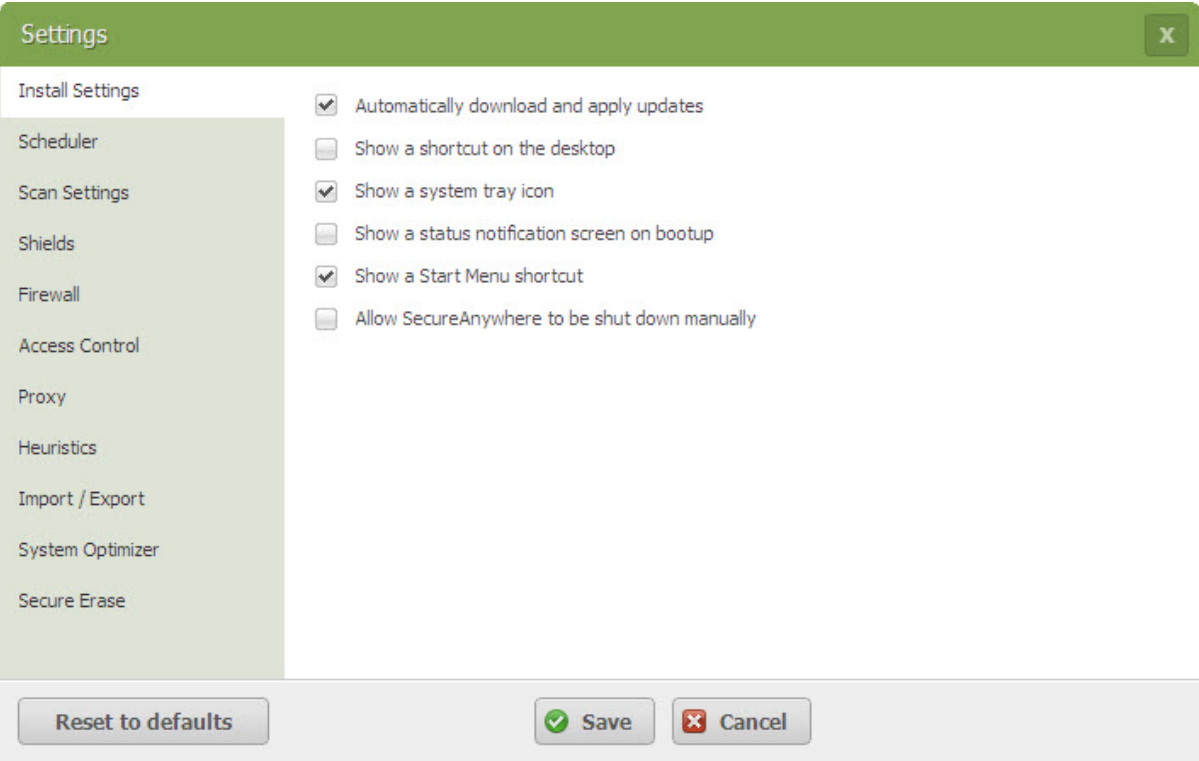




2. In the upper right corner, click the **Advanced Settings** link.



The Settings window displays.

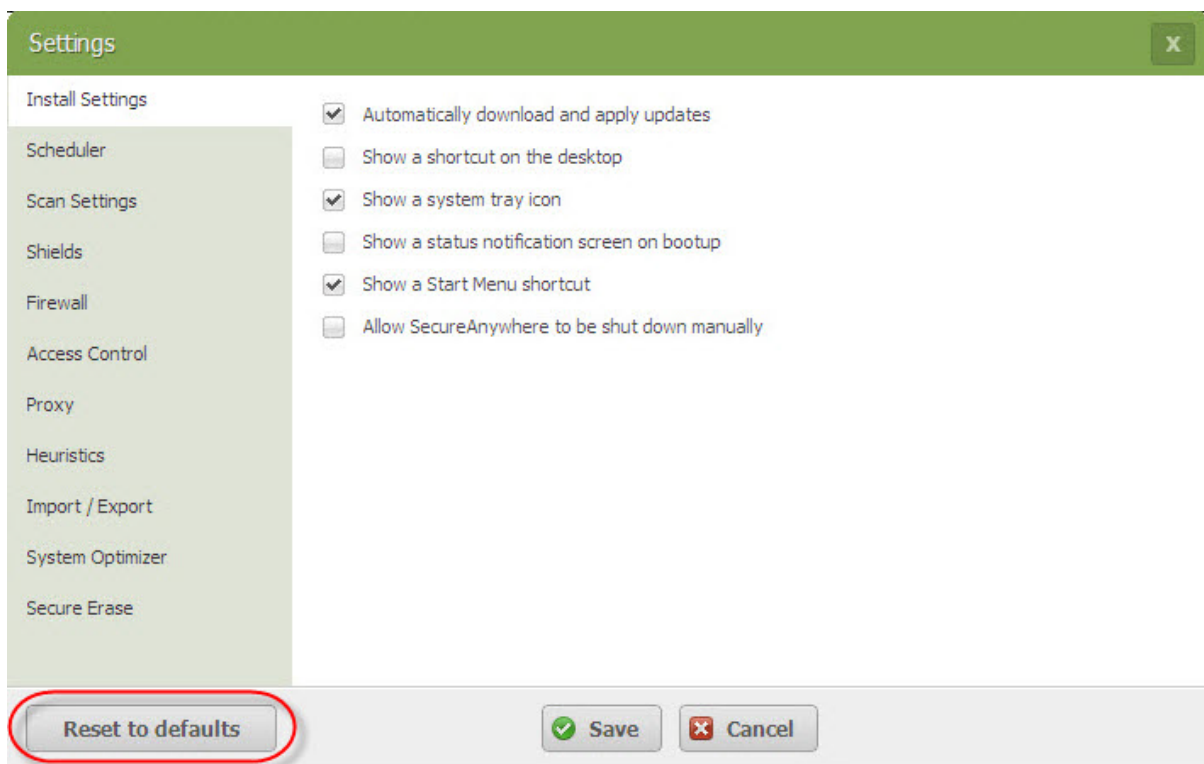


3. To change a setting, do one of the following:
- To activate a setting, select the checkbox.
  - To deactivate a setting, deselect the checkbox.

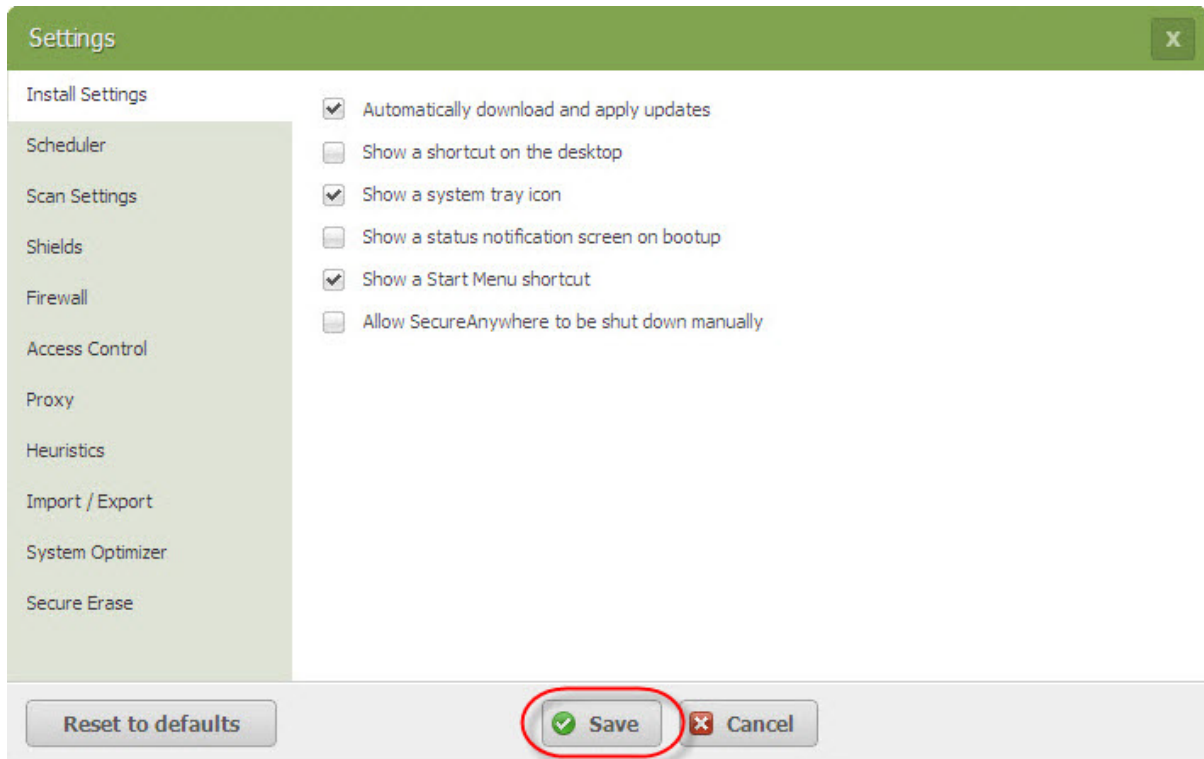
The following table describes the settings.

SETTING	DESCRIPTION
<b>Automatically download and apply updates</b>	Downloads product updates automatically without alerting you.
<b>Show a SecureAnywhere shortcut on the desktop</b>	Provides quick, double-click access to the main interface by placing the Webroot icon on your desktop.
<b>Show a system tray icon</b>	Provides quick access to Identity Shield functions by placing the Webroot icon on your desktop. You can double-click the icon to display the main interface or right-click the icon to display a menu of common functions, like scanning.
<b>Show a status notification on bootup</b>	Displays the Webroot splash screen on system startup, which lets you know that the program is running and protecting your computer.
<b>Show Start Menu shortcut</b>	Lists Webroot SecureAnywhere in the Windows Startup menu.
<b>Allow SecureAnywhere to be shut down manually</b>	Displays a Shutdown command in the system tray. If you deselect this option, the Shutdown command is removed from the menu.

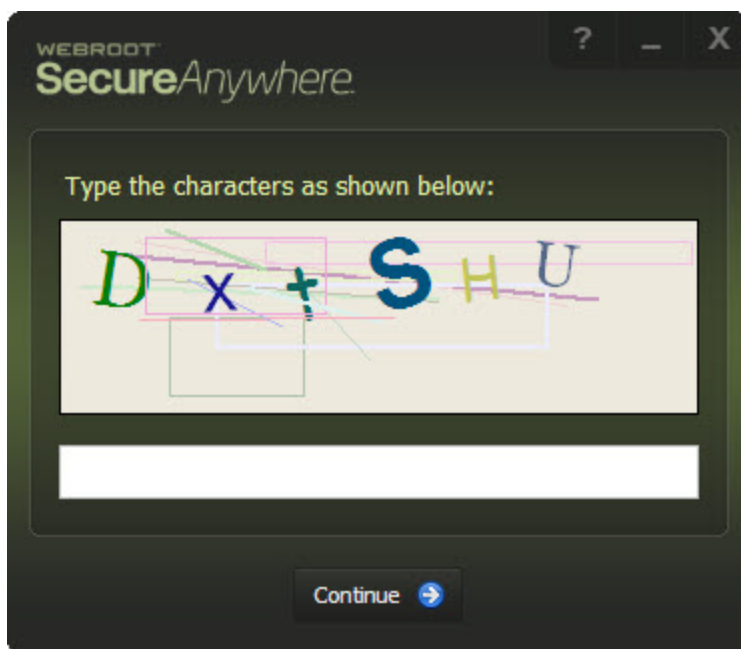
4. If you make changes and decide you want to return to the recommended settings, click the **Reset to Defaults** button.



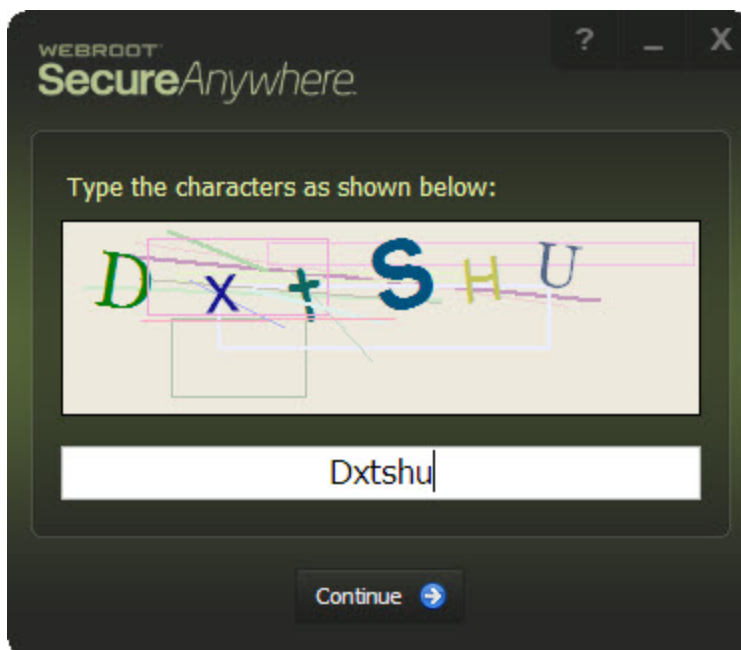
5. When you're done, click the **Save** button.



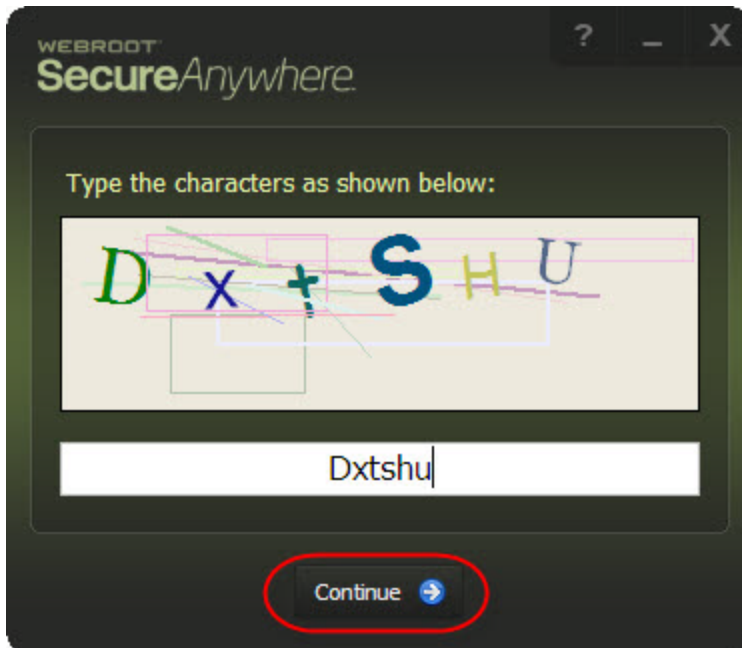
The system displays a CAPTCHA window.



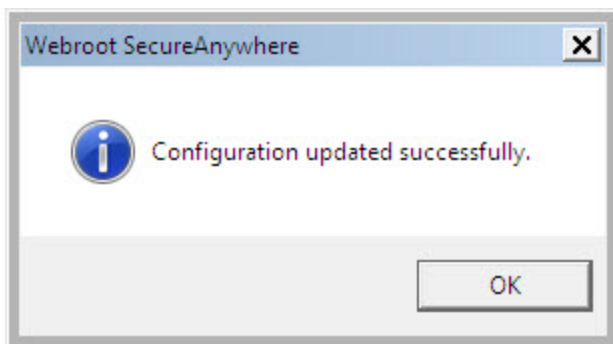
6. In the blank field, enter the characters as shown; letters are not case sensitive.



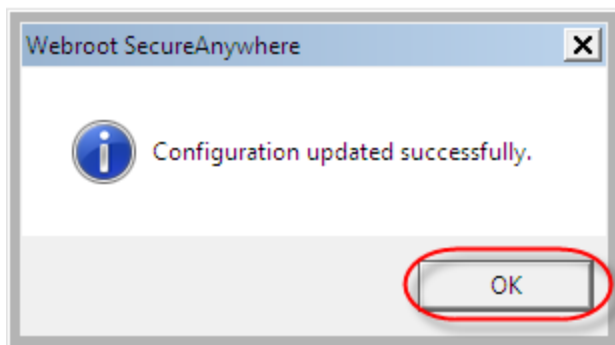
7. Click the **Continue** button.



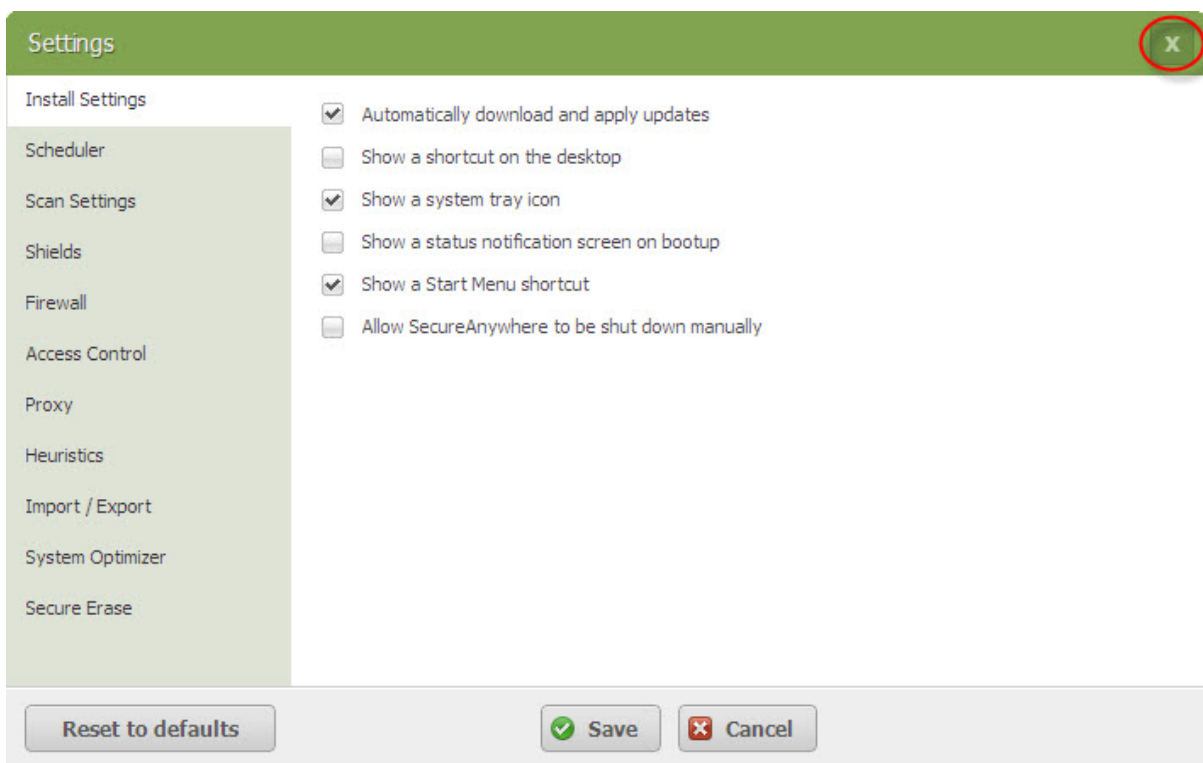
The system displays a success message.



- Click the **OK** button.

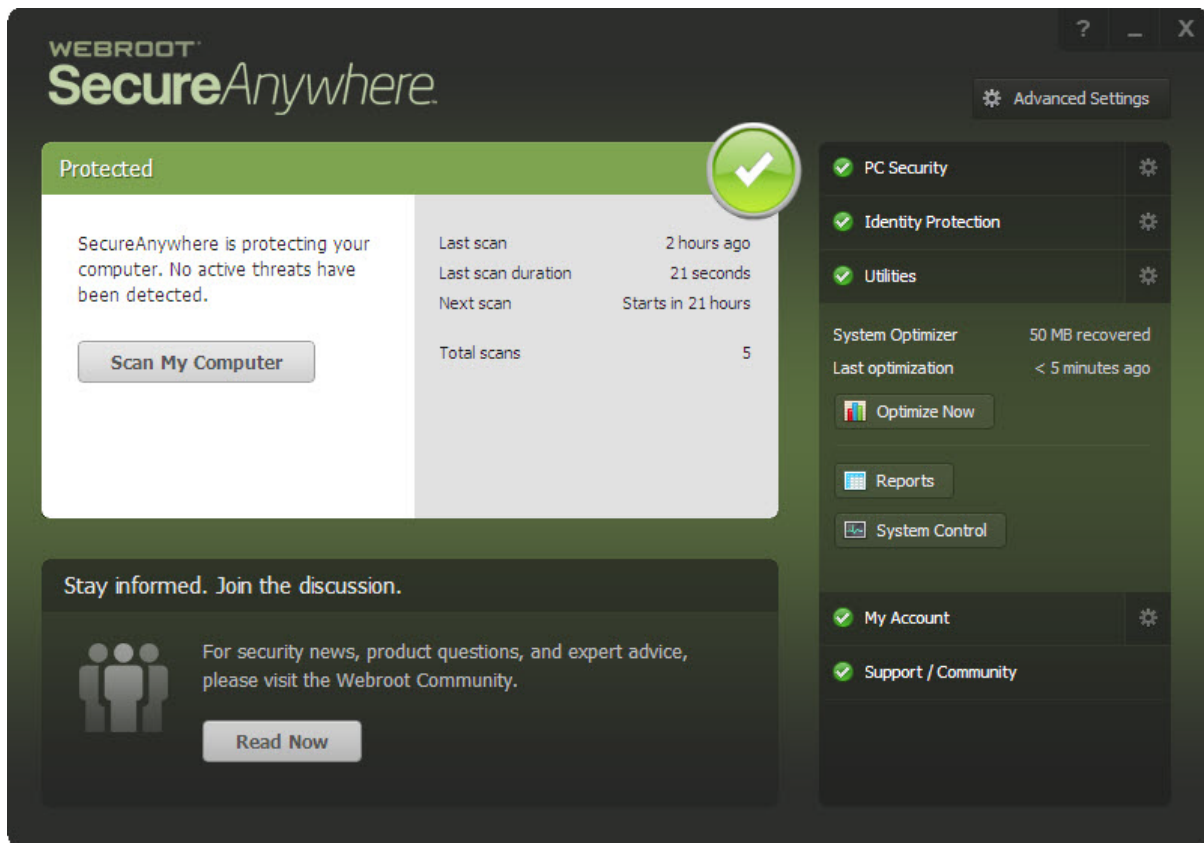


- To return to the main interface, in the upper right corner, click the **X**.



The main interface displays.





# Chapter 3: Managing Identity Protection

To manage Identity Protection, see the following topics:

---

<b>Changing Identity Shield Settings .....</b>	<b>25</b>
<b>Managing Protected Applications .....</b>	<b>29</b>
<b>Managing Protected Websites .....</b>	<b>42</b>
<b>Disabling Identity Shield .....</b>	<b>50</b>

---

## Changing Identity Shield Settings

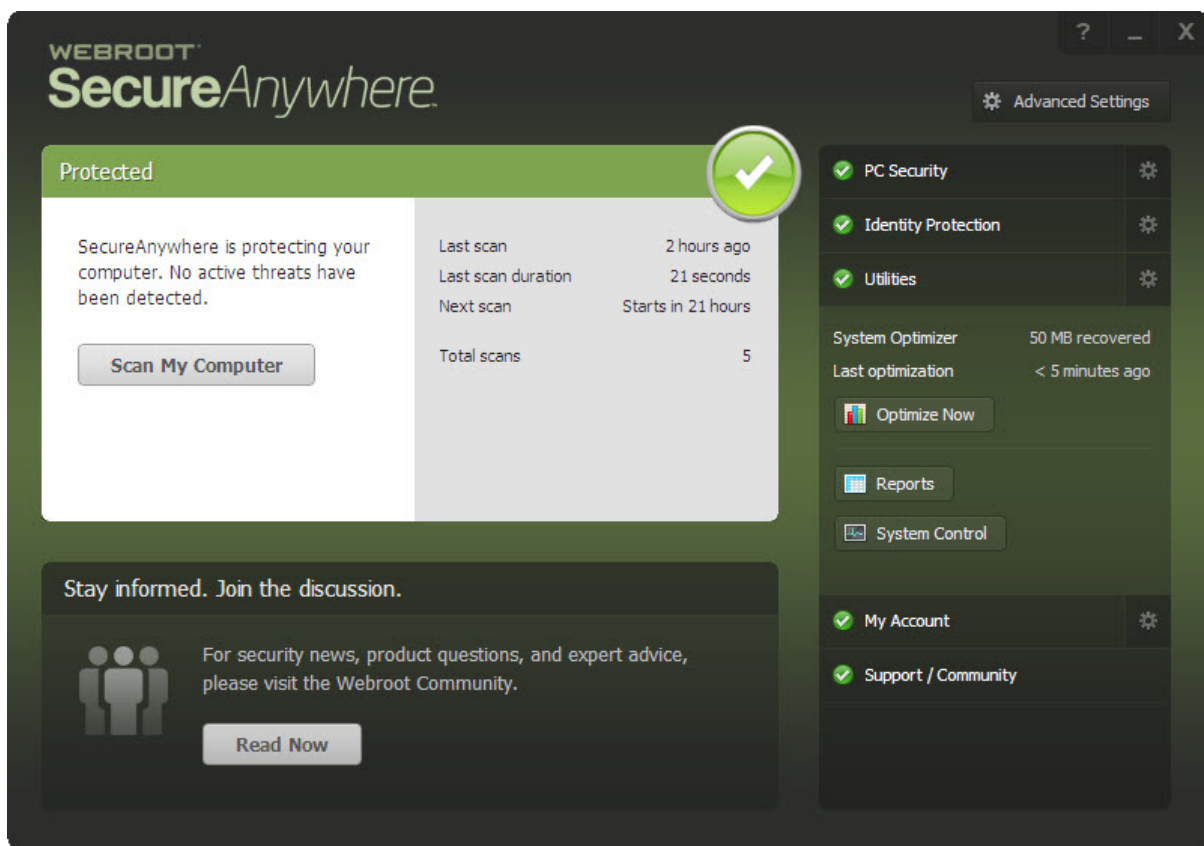
You can change the behavior of Identity Shield and control what it blocks, as described in this section. We recommend that you keep Webroot's default settings.

### To change Identity Shield settings:

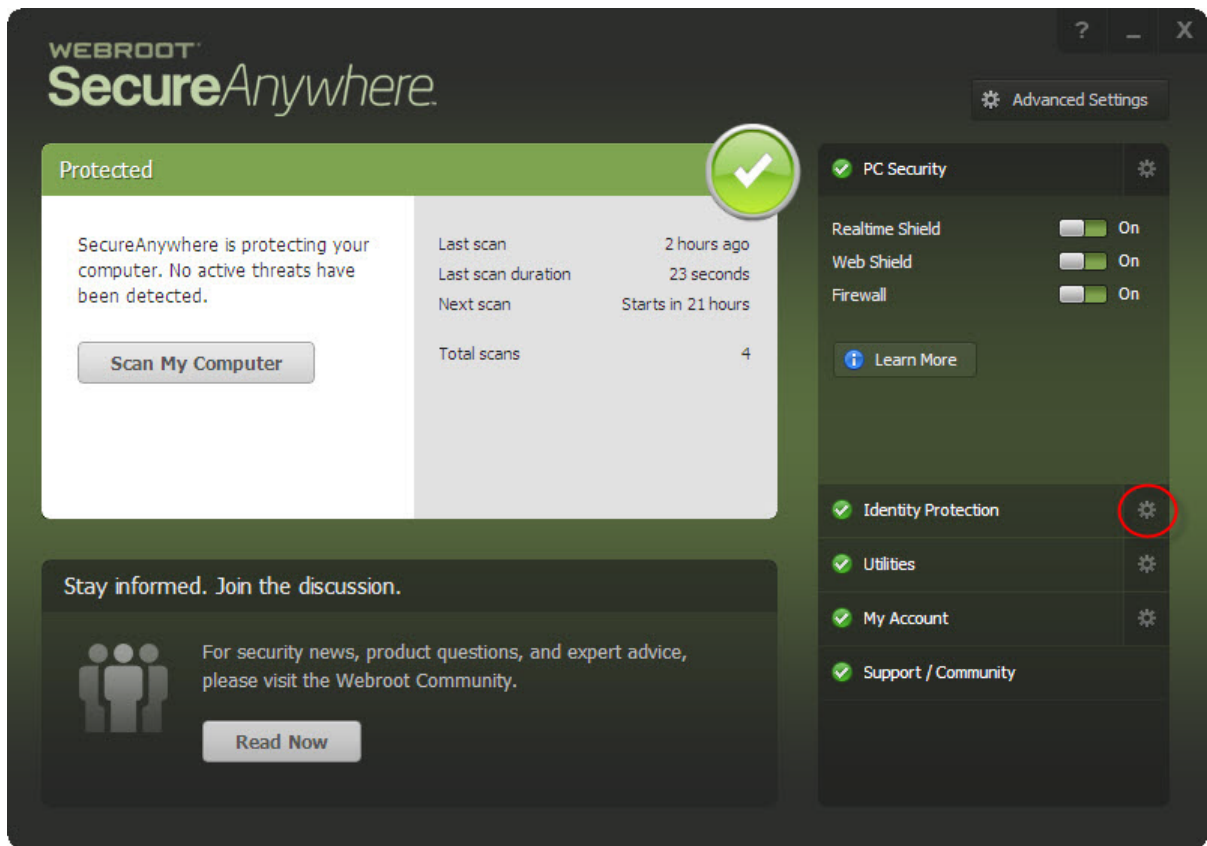
1. From the system tray, double-click the **Webroot** icon to display the main interface.



The main interface displays.



2. Click the **Identity Protection** tab.



The Identity Protection tab displays.

3. In the upper right corner, click the **Change Settings** link.

The Identity Shield settings window displays.

4. To change a setting, do either of the following:
- To activate a setting, select the checkbox.
  - To deactivate a setting, deselect the checkbox.

The following table describes the checkbox settings:

<b>CHECKBOX</b>	<b>DESCRIPTION</b>
<b>Verify websites when visited to determine legitimacy</b>	Analyzes the IP address of each website to determine if it has been redirected or is on our blacklist. If the shield detects an illegitimate website, it blocks the site and displays an alert.
<b>Verify the DNS/IP resolution of websites to detect Man-in-the-Middle attacks</b>	Looks for servers that could be redirecting you to a malicious website, a man-in-the-middle attack. If the shield detects a man-in-the-middle attack, it blocks the threat and displays an alert.
<b>Block websites from creating high risk tracking information</b>	<p>Blocks third-party cookies from installing on your computer if the cookies originate from malicious tracking websites.</p> <ul style="list-style-type: none"> <li>• Cookies are small bits of text generated by a web server and then stored on your computer for future use.</li> <li>• Cookies can contain everything from tracking information to your personal preferences.</li> </ul>
<b>Prevent programs from accessing protected credentials</b>	Blocks programs from accessing your login credentials, for example, when you type your name and password or when you request a website to remember them.

CHECKBOX	DESCRIPTION
<b>Warn before blocking untrusted programs from accessing protected data</b>	Displays an alert any time malware attempts to access data, instead of blocking known malware automatically. This option is for technical users only; we recommend that you keep this option disabled so the program does not display numerous alerts.
<b>Allow trusted screen capture programs access to protected screen contents</b>	Allows you to use legitimate screen capture programs, no matter what content is displayed on your screen.

5. If you make changes and decide you want to return to the recommended settings, click the **Reset to Defaults** button.
  6. When you're done, click the **Save All** button.
-

## Managing Protected Applications

You can provide additional security for software applications that may contain confidential information, such as Instant Messaging clients or tax preparation software.

By protecting these applications, you secure them against information-stealing Trojans such as:

- [Keyloggers](#)
- [Man-in-the-middle attacks](#)
- [Clipboard stealers](#)

As you work on your computer, Identity Shield automatically adds web browsers and applications to the Protected Applications list. Identity Shield assigns applications to one of these levels of protection:

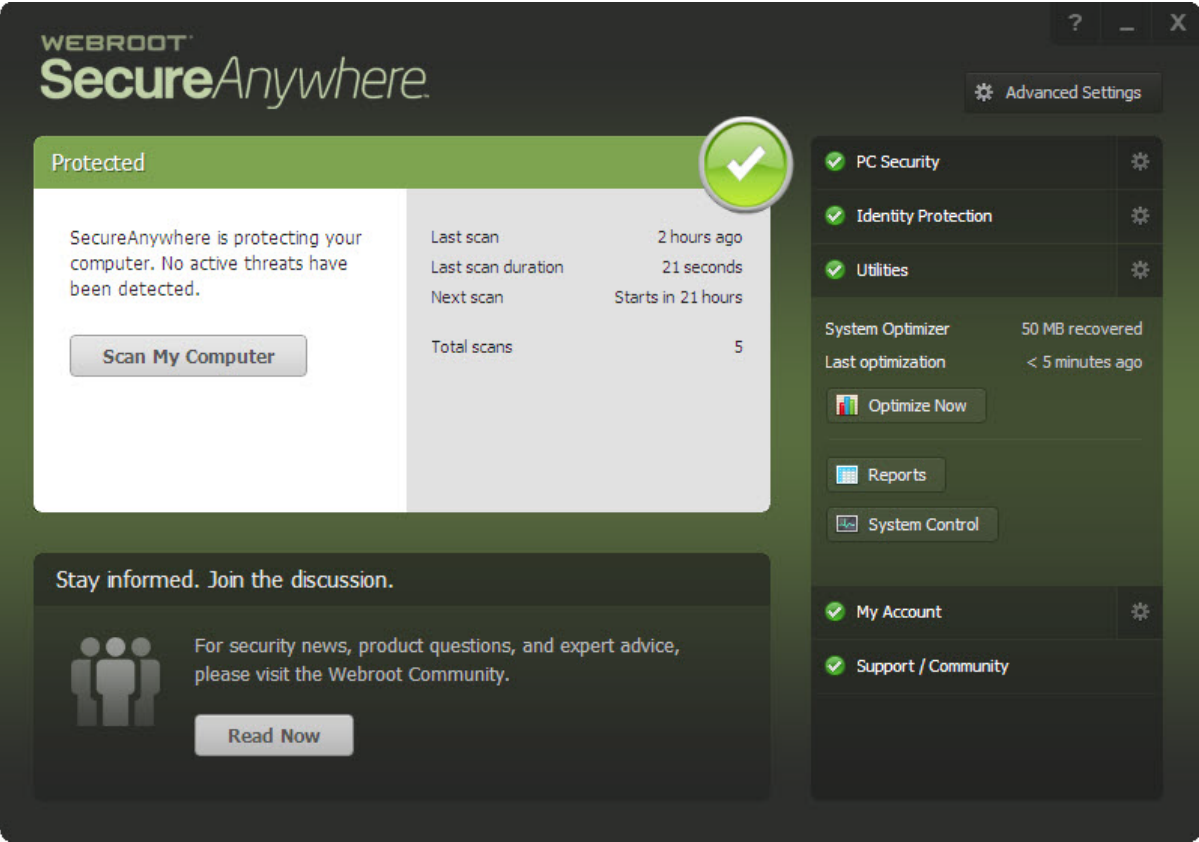
- Protect
- Allow
- Deny

### To manage protected applications:

1. From the system tray, double-click the **Webroot** icon to display the main interface.

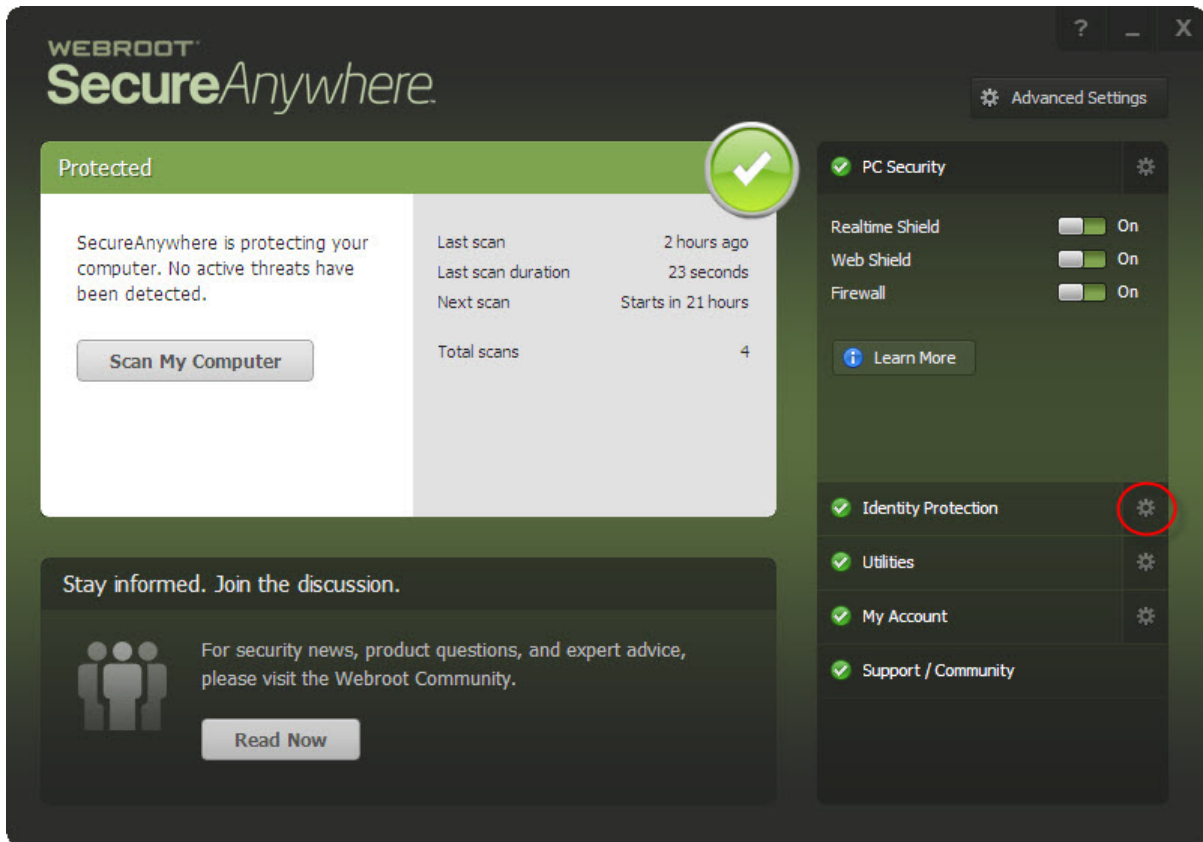


The main interface displays.

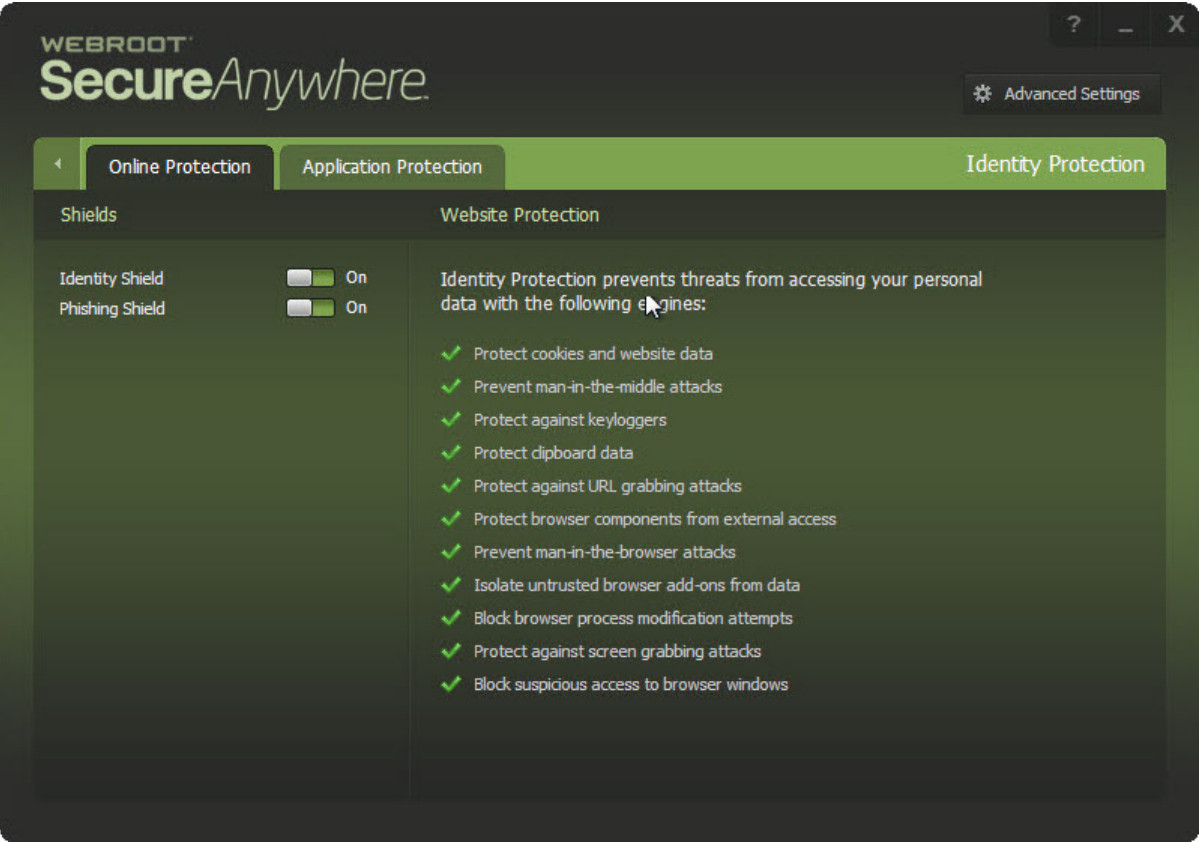




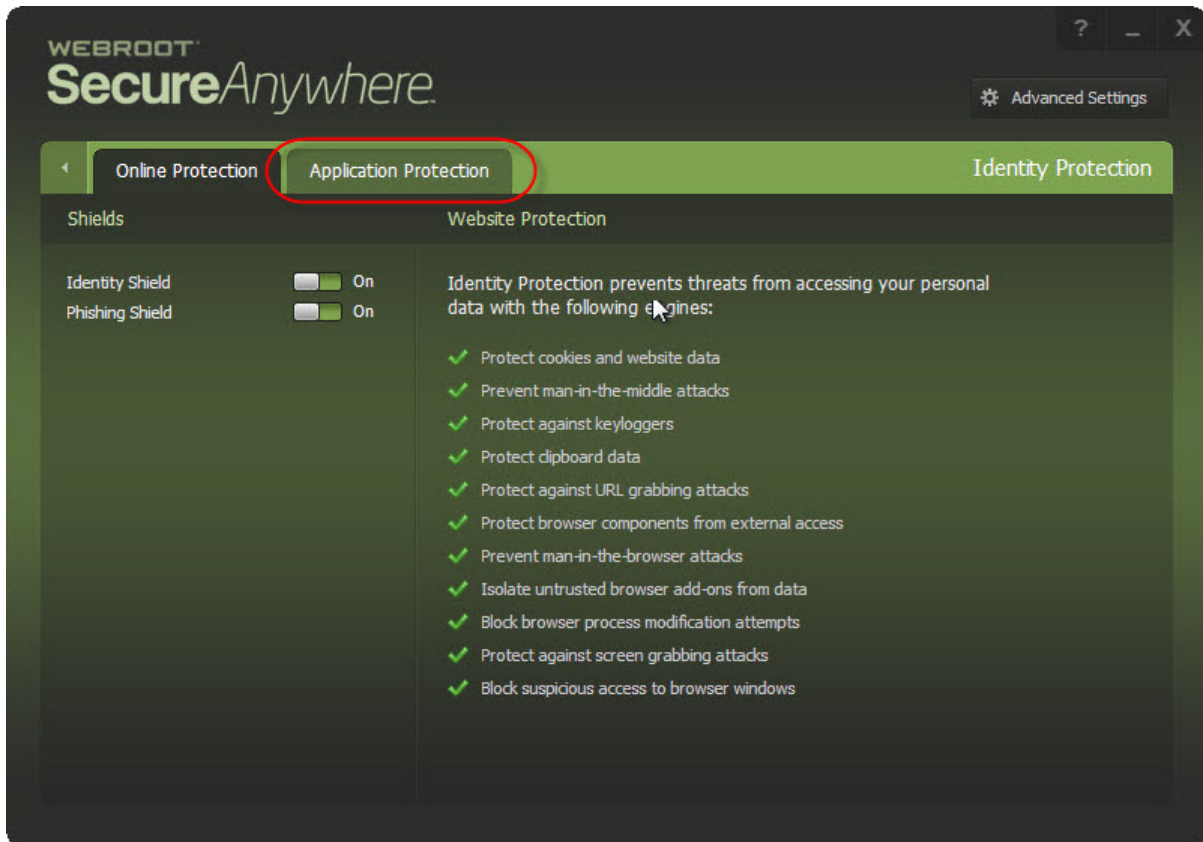
2. Click the **Identity Protection** gear icon.



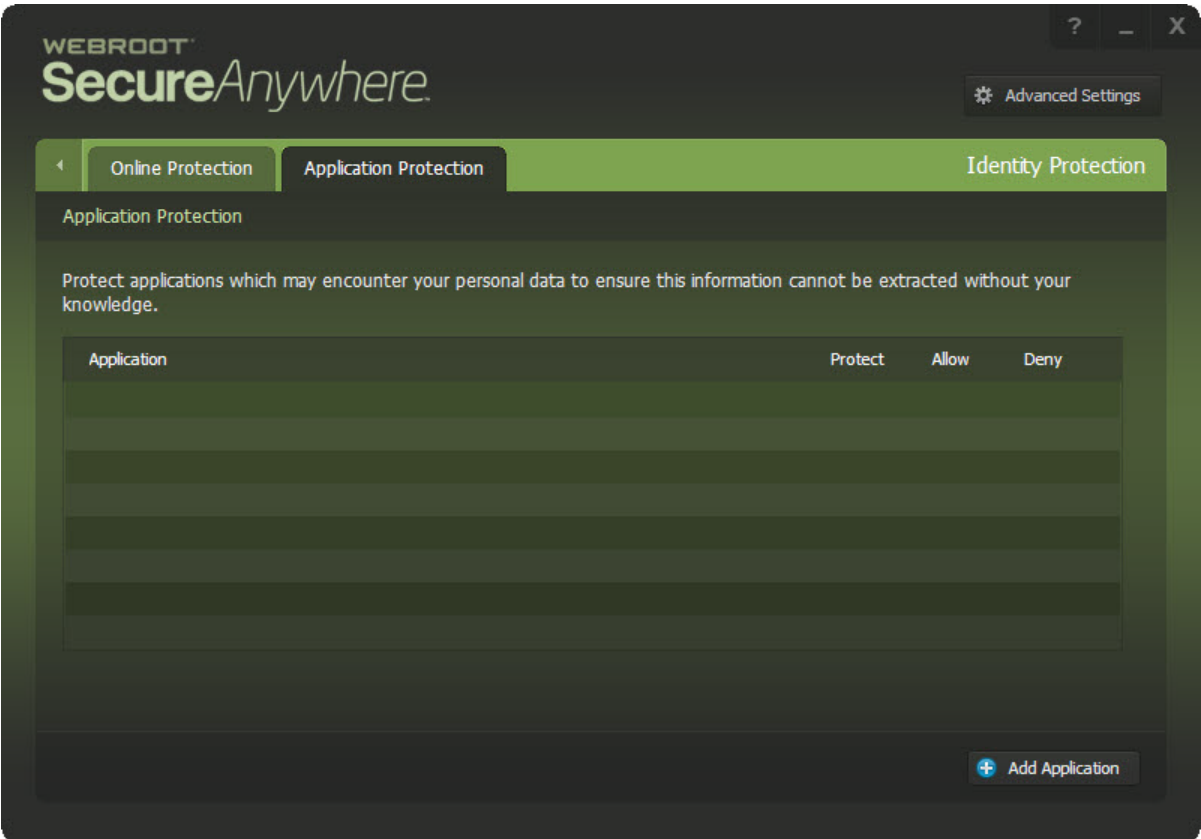
The Identity Protection interface displays.



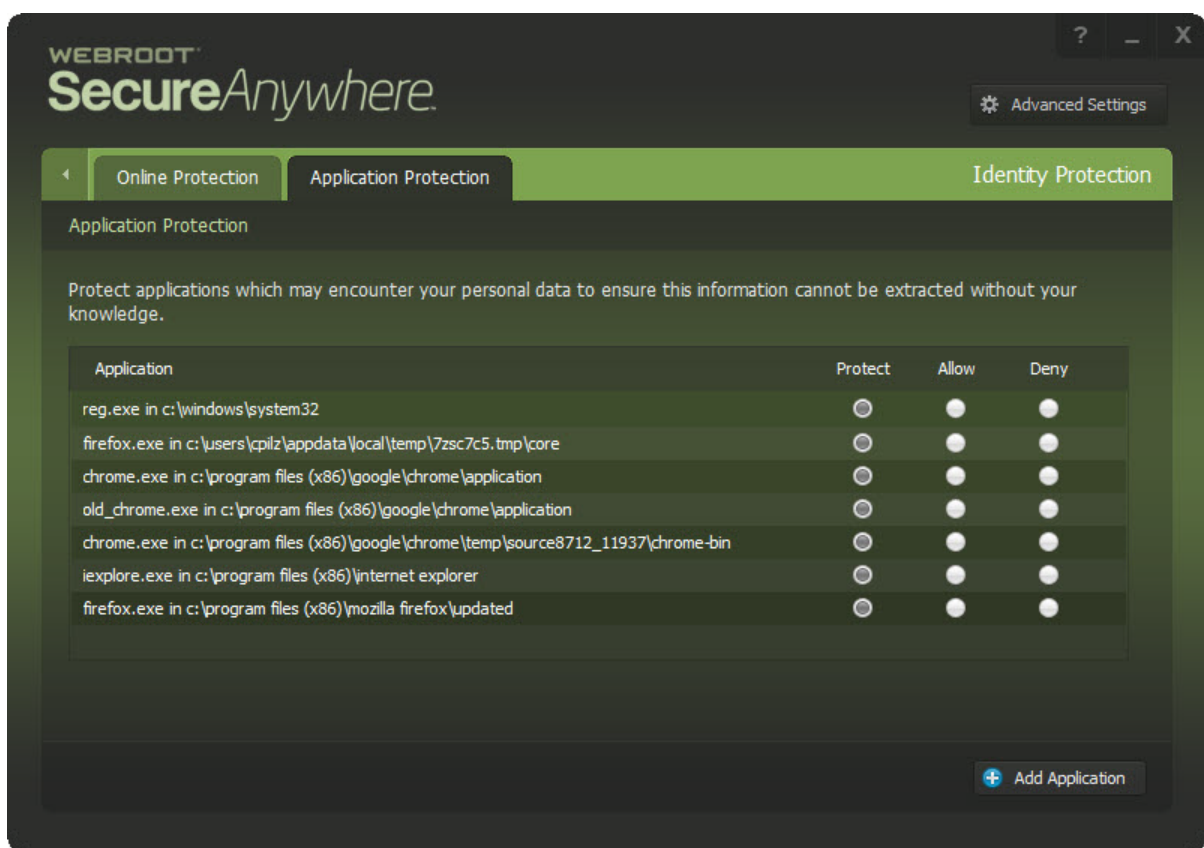
3. Click the **Application Protection** tab.



The Application Protection interface displays.



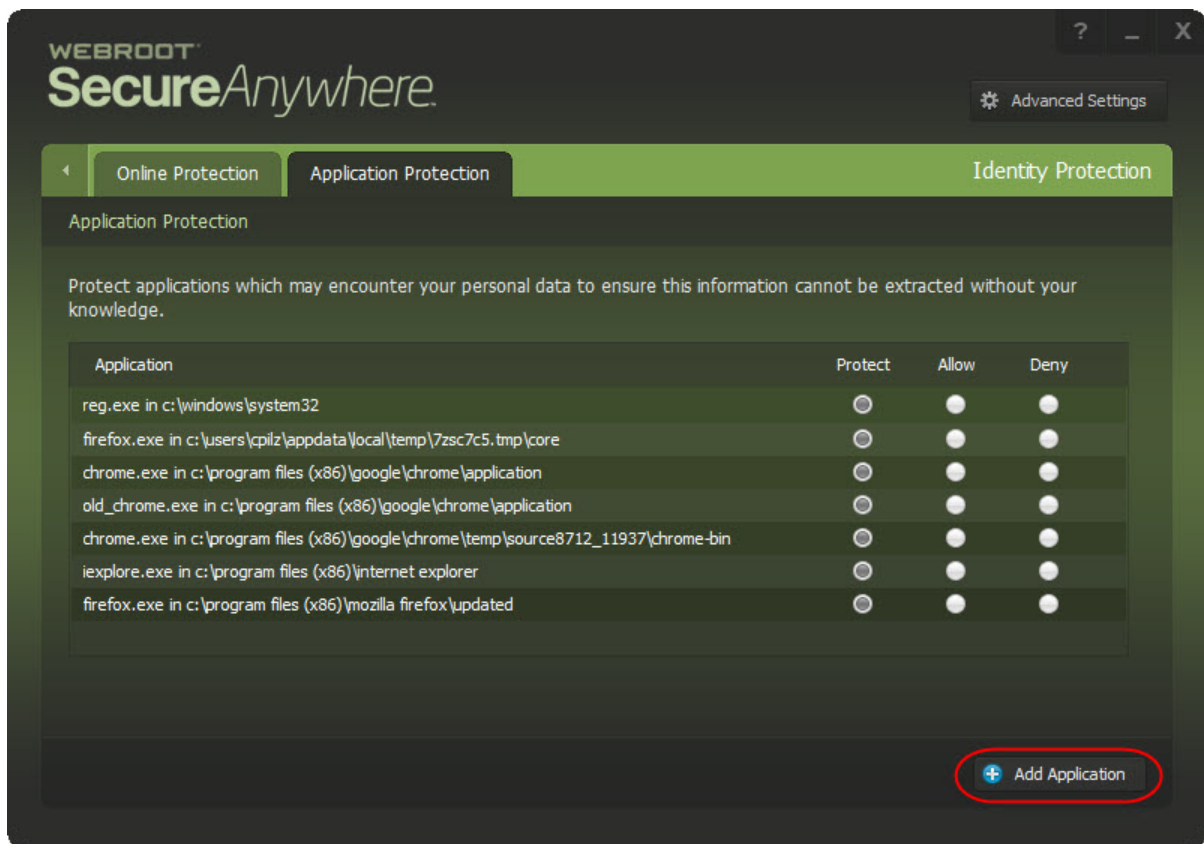
This interface lists the web browsers on your system and any other applications that you run on the computer.



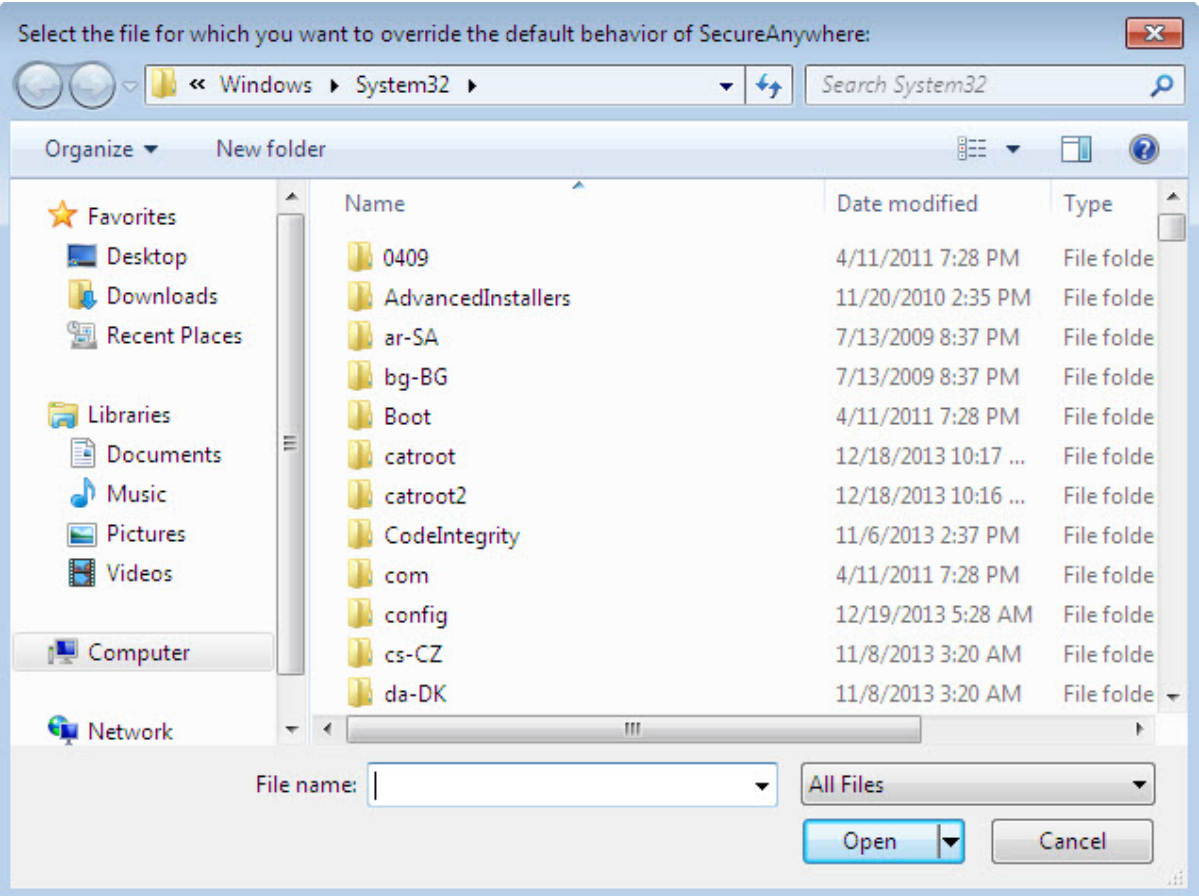
4. In the row for the application you want to modify, select the radio button for one of the following:

<b>RADIO BUTTON</b>	<b>DESCRIPTION</b>
<b>Protect</b>	<p>Protected applications are secured against information-stealing malware, but also have full access to data on the system.</p> <p>By default, web browsers are assigned the protect status.</p> <p>You can to add other software applications to protect level, such as financial management software.</p> <p>When you run a protected application, the Webroot icon in the system tray displays a padlock.</p>
<b>Allow</b>	<p>Allowed applications are not secured against information-stealing malware, and also have full access to protected data on the system.</p> <p>Many applications unintentionally access protected screen contents or keyboard data without malicious intent when running in the background.</p> <p>If you trust an application that is currently marked as Deny, you can change it to Allow.</p>
<b>Deny</b>	<p>Denied applications cannot view or capture protected data on the system, but can otherwise run normally.</p>

- To include another application in this list, click the **Add Application** button.

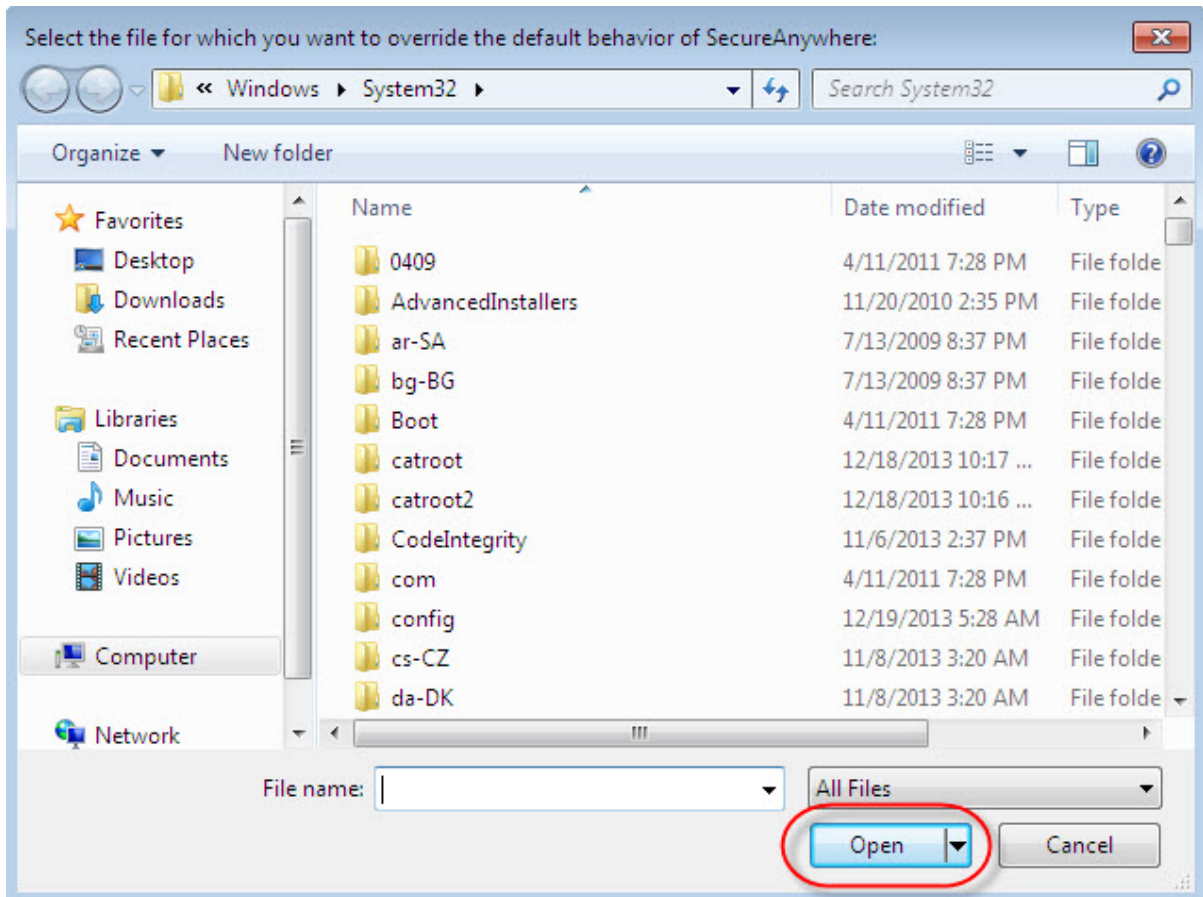


The system displays a browser window. Browse to the executable file you want to add to the Application Protection list.





6. When you have found the executable file, click the **Open** button.

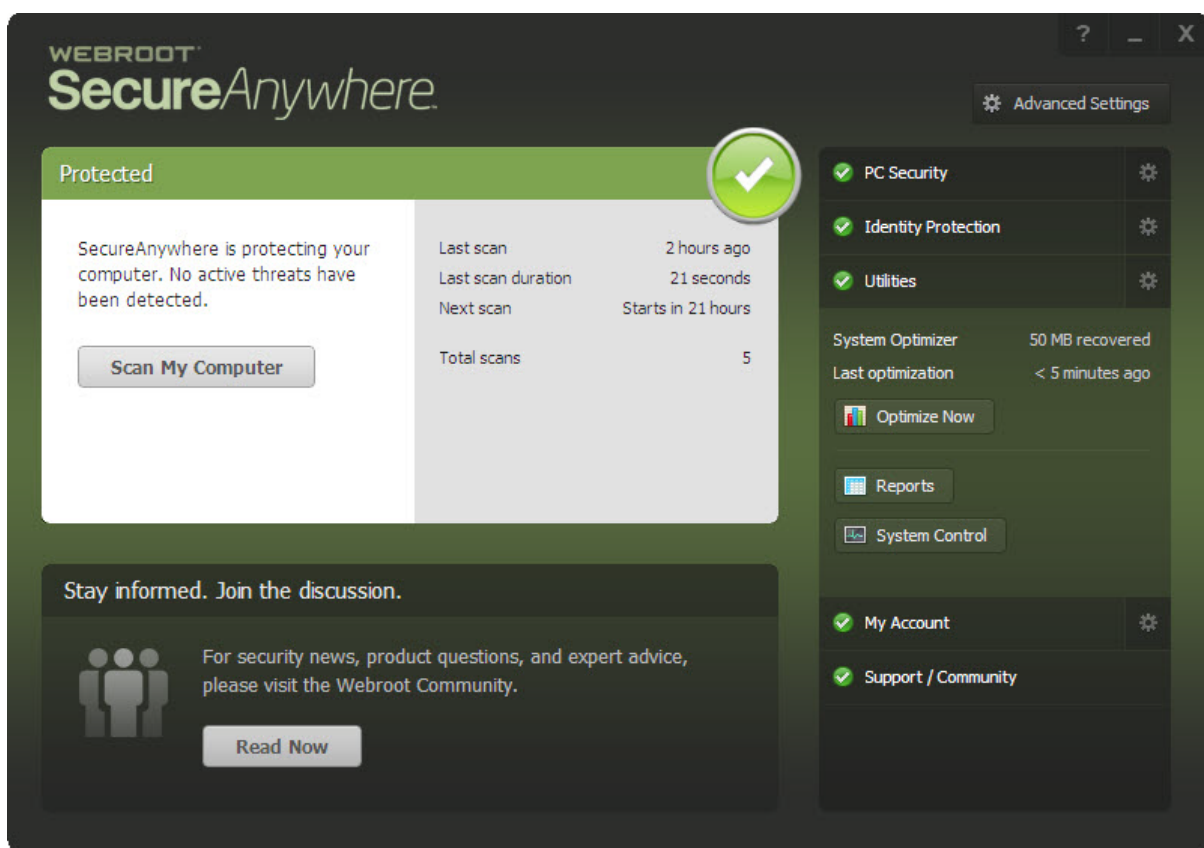


The system adds the file to the Application Protection list.

- When you're done, click the **Back** arrow to return to the main interface.



The main interface displays.



## Managing Protected Websites

Identity Shield already includes the recommended security settings for specific types of websites, however you can adjust security for a website to one of the following levels:

- None
- Low
- Medium
- High
- Maximum

Identity Shield only protects a secured website when the browser window is active in the foreground window; the padlock displays in the tray icon.

For full protection from screen grabbers, information-stealing Trojans, and other threats, make sure the browser window is in the foreground and the padlock is displayed in the tray icon. If Identity Shield encounters a website that may be a threat, it displays an alert.

If an alert displays, do one of the following:

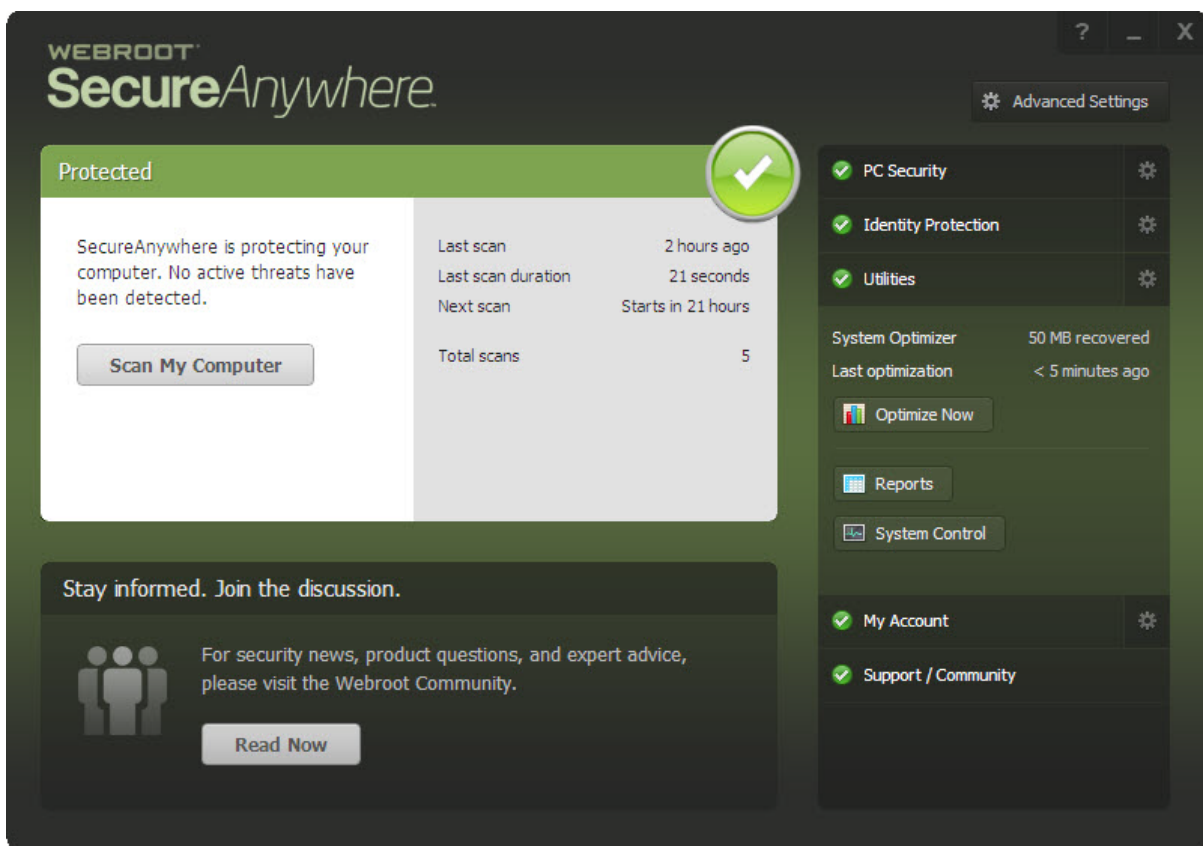
- **To stay secure** — Click the **Block** button.
- **To continue despite the warning** — Click the **Allow** button.

### To manage protected websites:

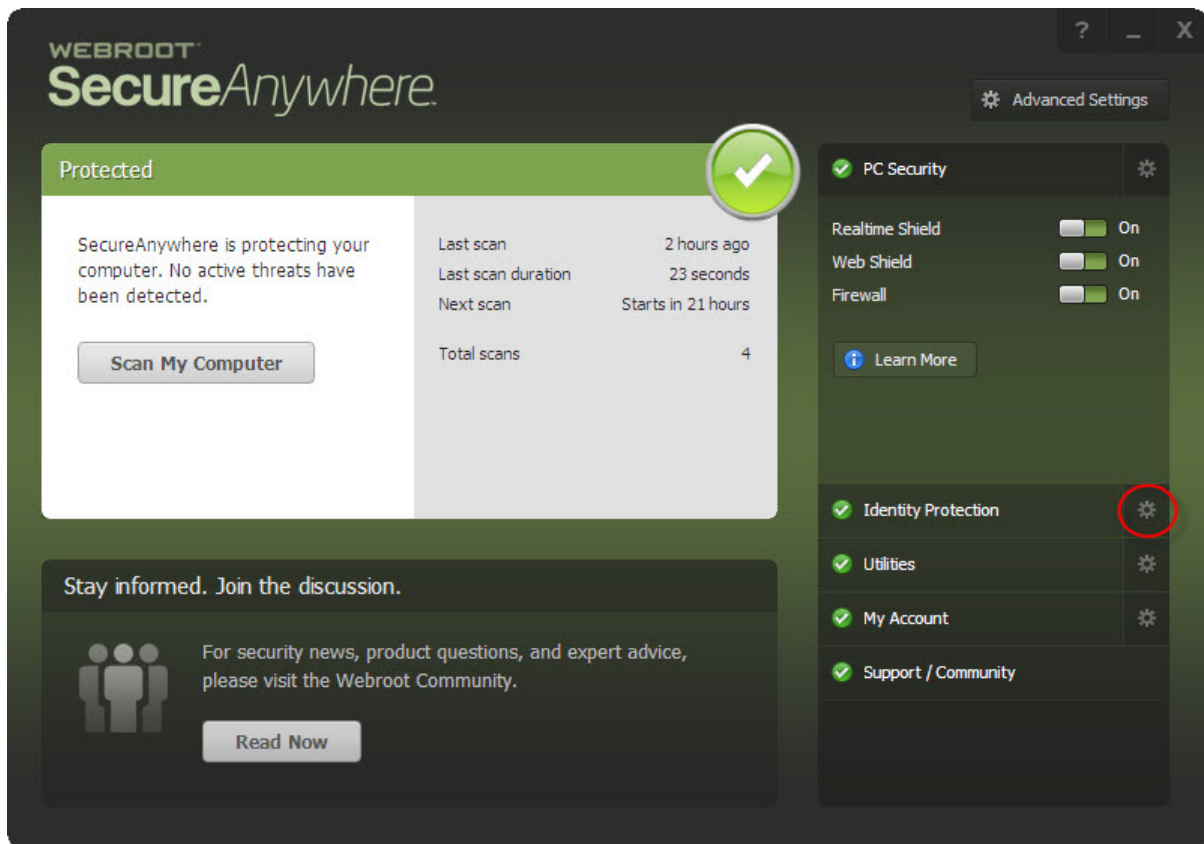
1. From the system tray, double-click the **Webroot** icon to display the main interface.



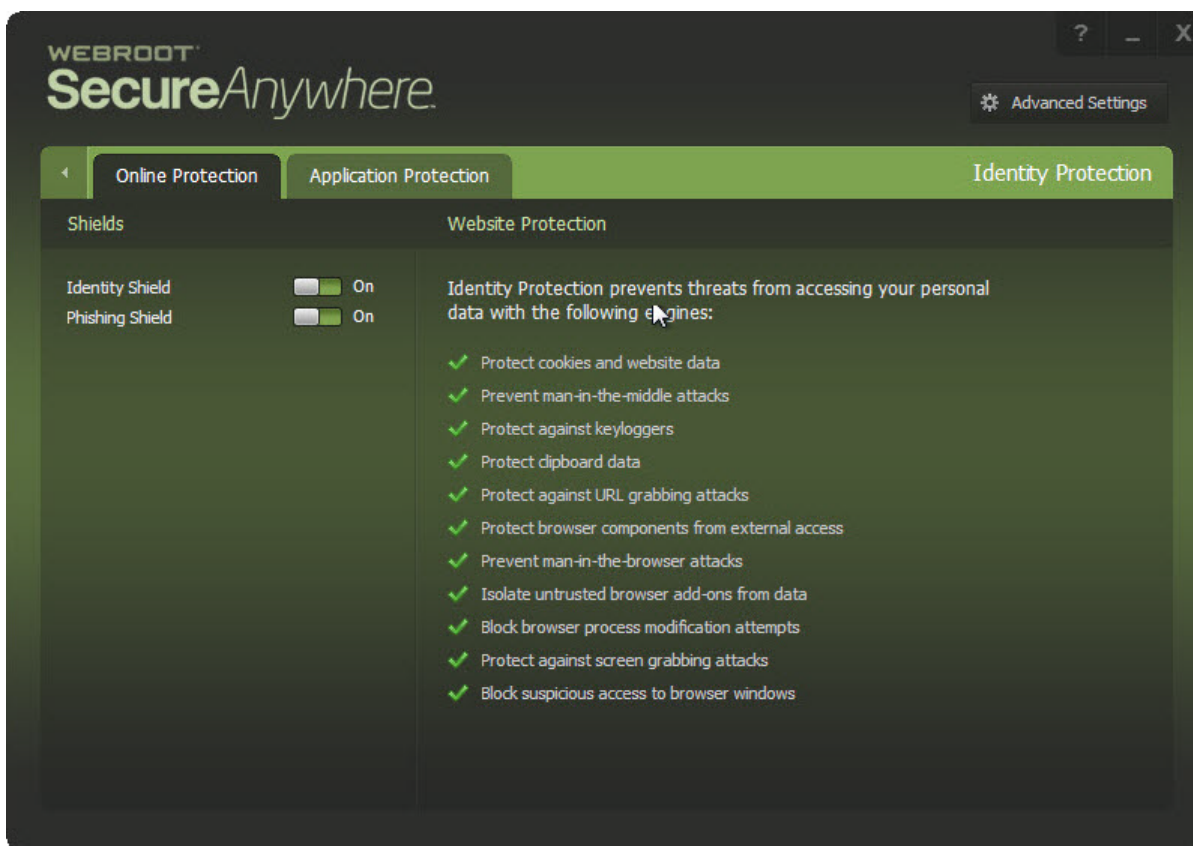
The main interface displays.



2. Click the **Identity Protection** gear icon.



The Identity Protection interface displays.



The following table describes the protection options.

OPTION	DESCRIPTION
<b>Protect cookies and saved website data</b>	Alerts you if a malicious program attempts to gather personal data from cookies installed on your computer. Cookies are small bits of text generated by a web server and then stored on your computer for future use. Cookies can contain everything from tracking information to your personal preferences.
<b>Prevent man-in-the middle attacks</b>	Intercepts main-in-the-middle attacks. A main-in-the-middle attack is when a server attempts to redirect you to a malicious website.
<b>Protect against keyloggers</b>	<p>Stops keyloggers from recording keystrokes on your computer.</p> <p>Keyloggers may monitor emails, chat room dialogue, instant message dialogue, websites visited, usernames, passwords, programs run, and any other typed entries. They have the ability to run in the background, hiding their presence.</p>
<b>Protect sensitive clipboard data</b>	Stops malware programs from capturing clipboard data. The clipboard is a utility that allows you to cut and paste stored data between documents or applications.
<b>Protect against URL grabbing attacks</b>	Hides your web browsing activity from malware that attempts to log the websites you visit.
<b>Protect browser components from external access</b>	Hides your web browsing activity from malware that attempts to modify your browser with memory injection and other behind-the-scenes attacks.



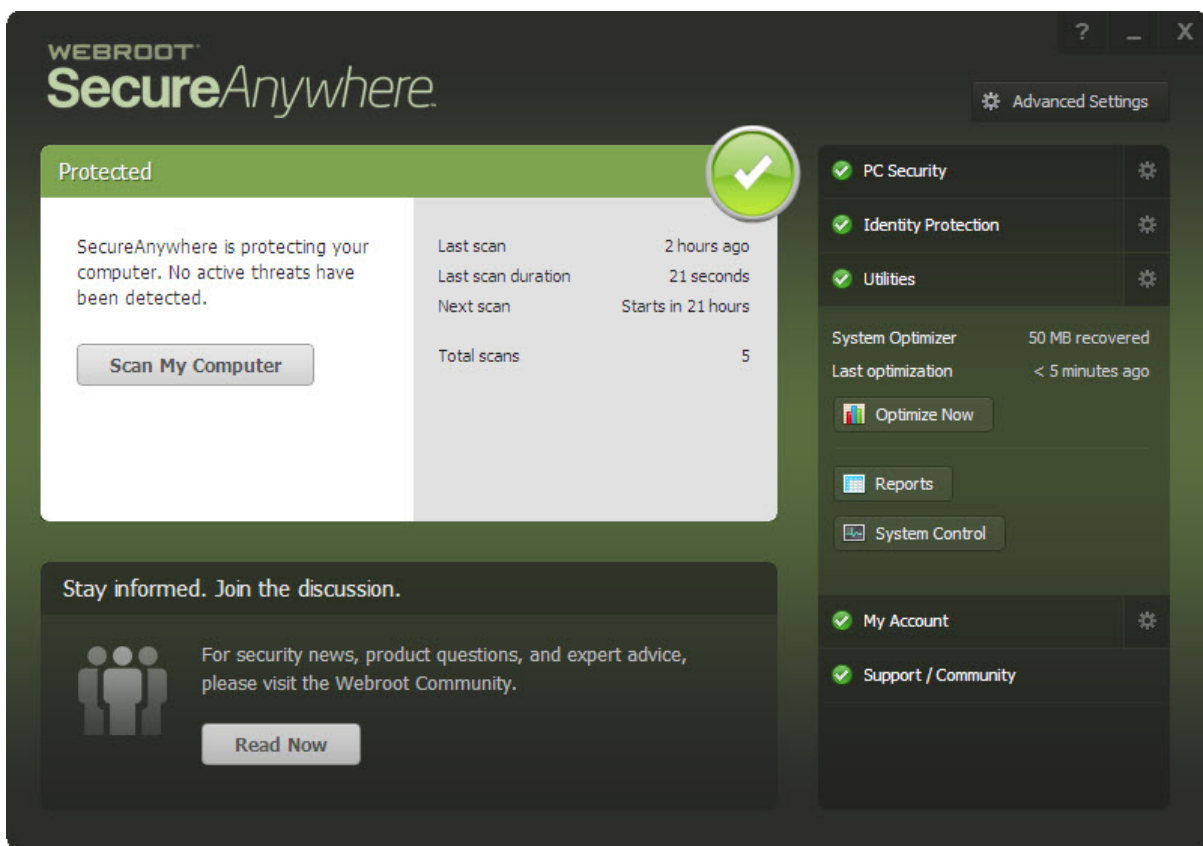
OPTION	DESCRIPTION
<b>Protect against man-in-the-browser attack</b>	<p>Blocks a malicious toolbar from stealing data.</p> <p>A man-in-the-browser attack is a Trojan that infects a web browser. It can modify pages and the content of your transactions without being detected.</p>
<b>Isolate untrusted browser add-ons from data</b>	<p>Blocks a browser add-on, a browser helper object, from stealing data. While most browser add-ons are legitimate, some can display ads, track your Internet activity, or hijack your home page.</p>
<b>Block browser process modification attempts</b>	<p>Analyzes browser memory to see if code injection is taking place.</p>
<b>Protect against screen grabbing attacks</b>	<p>Blocks a malicious program from viewing and capturing your screen content.</p>
<b>Block suspicious access to browser windows</b>	<p>Blocks a malicious program from viewing and capturing data in Windows components.</p>

For information about turning Identity Shield off, see [Disabling Identity Shield on page 50](#).

3. When you're done, click the **Back** arrow.



The main interface displays.



## Disabling Identity Shield

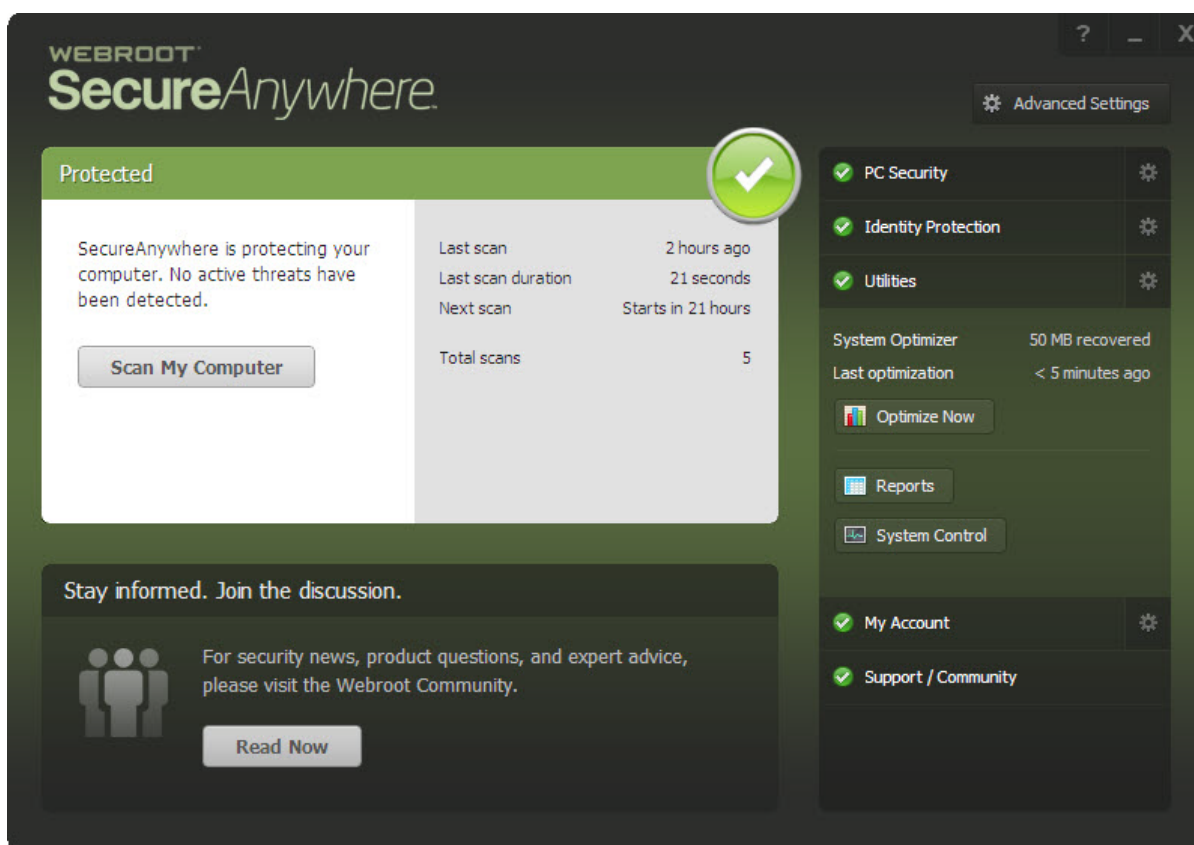
We recommend that you keep Identity Shield enabled; however, you can disable it if you want.

### To disable Identity Shield:

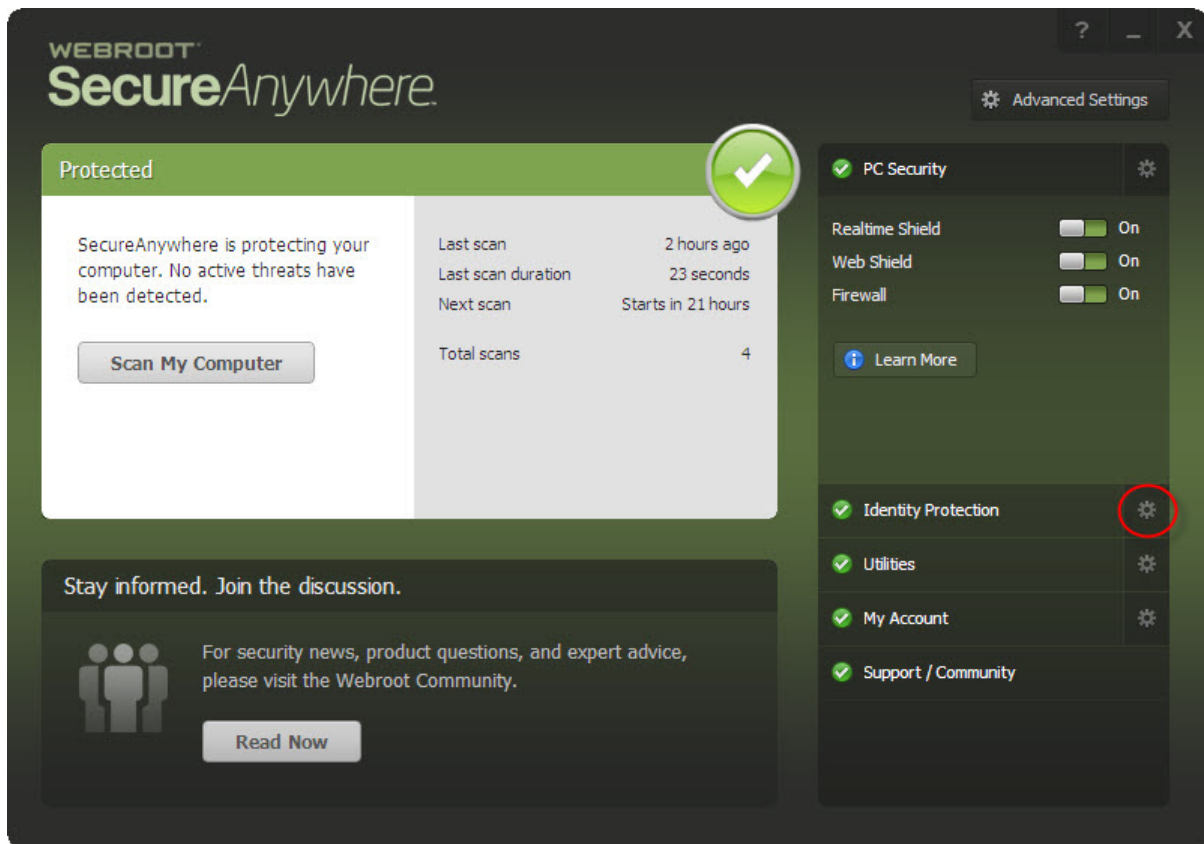
1. From the system tray, double-click the **Webroot** icon to display the main interface.



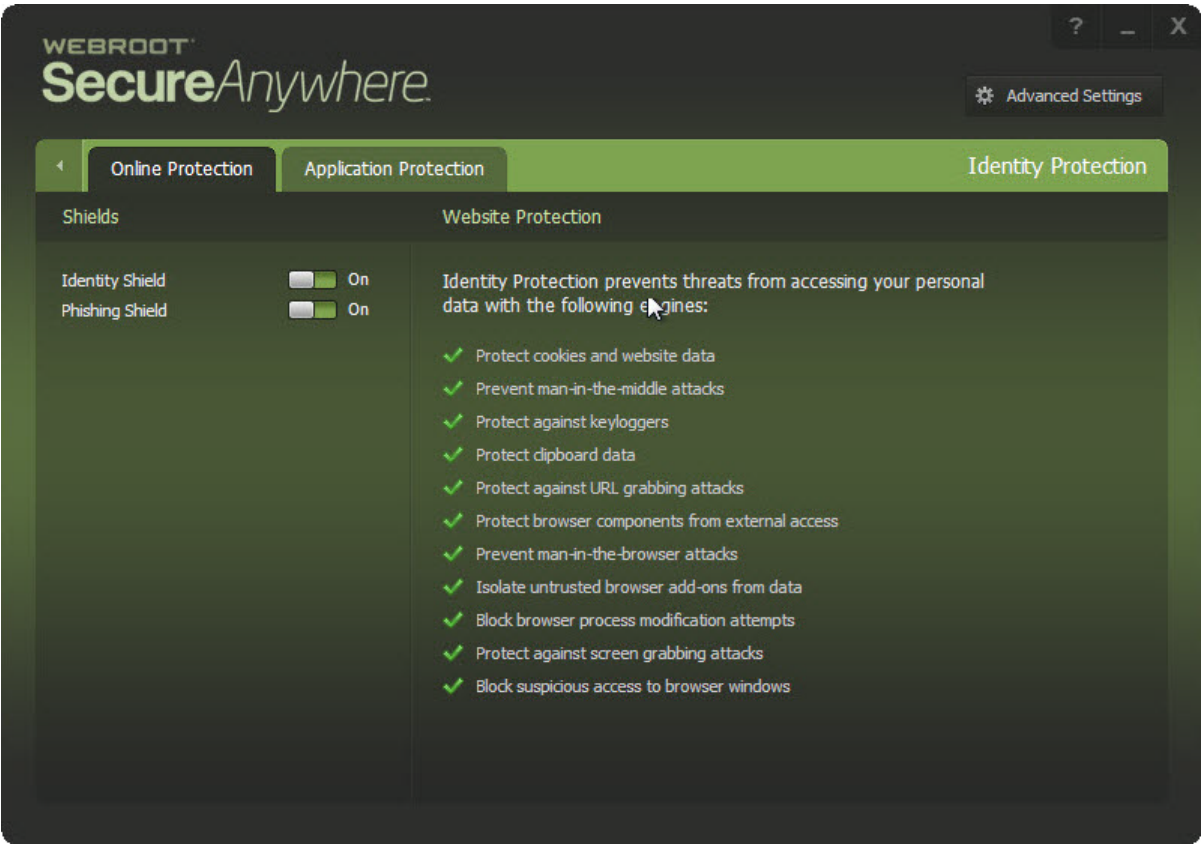
The main interface displays.



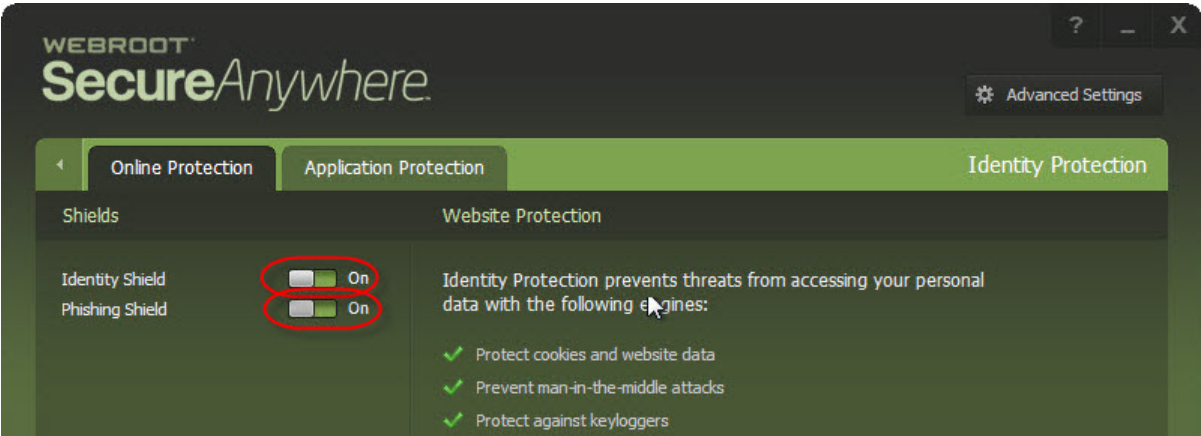
2. Click the **Identity Protection** gear icon.



The Identity Protection interface displays.



The Green button indicates that both shields are on.



3. You can do either of the following:
- To turn Identity Shield off, click **Green** button.
  - To turn Phishing Shield off, click the **Green** button.

When you turn a shield off, the button turns red and the interface turns brown, indicating that one or both shields is off.

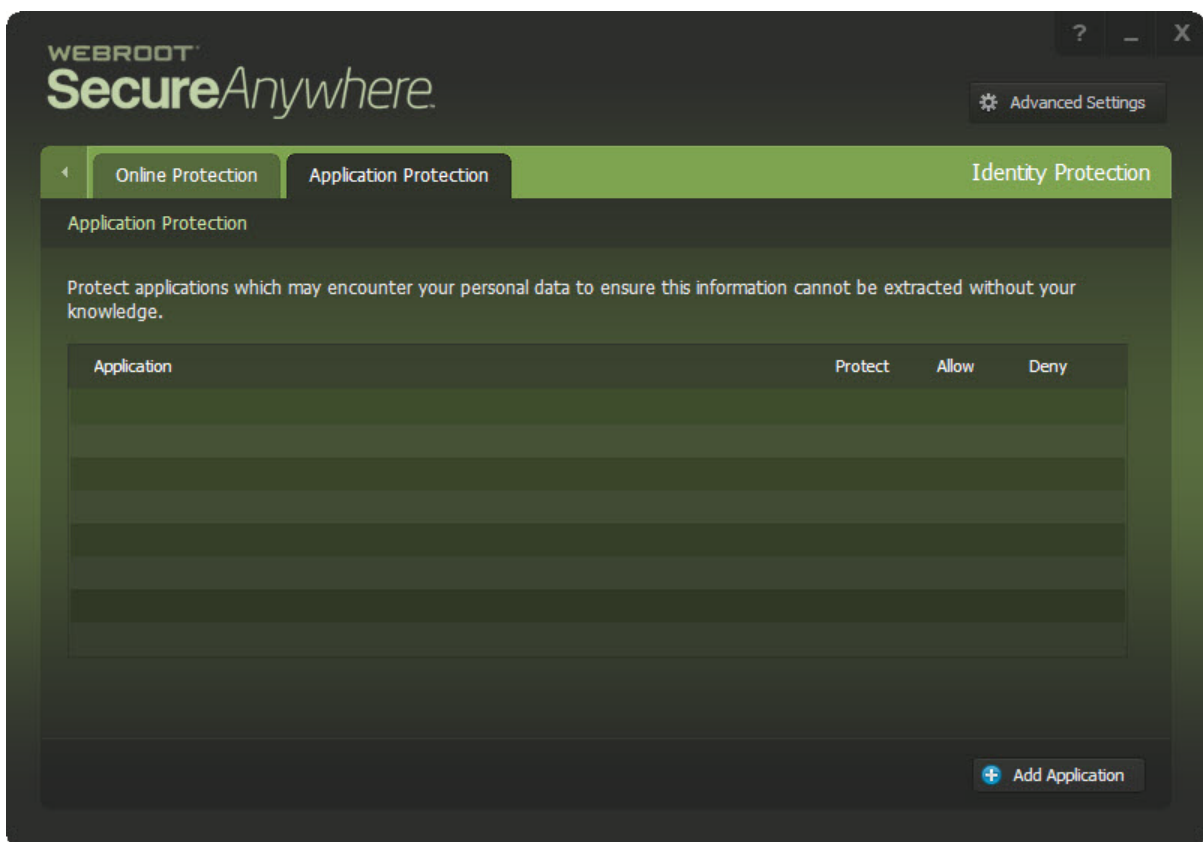


4. To turn either shield on again, click the **Red** button.

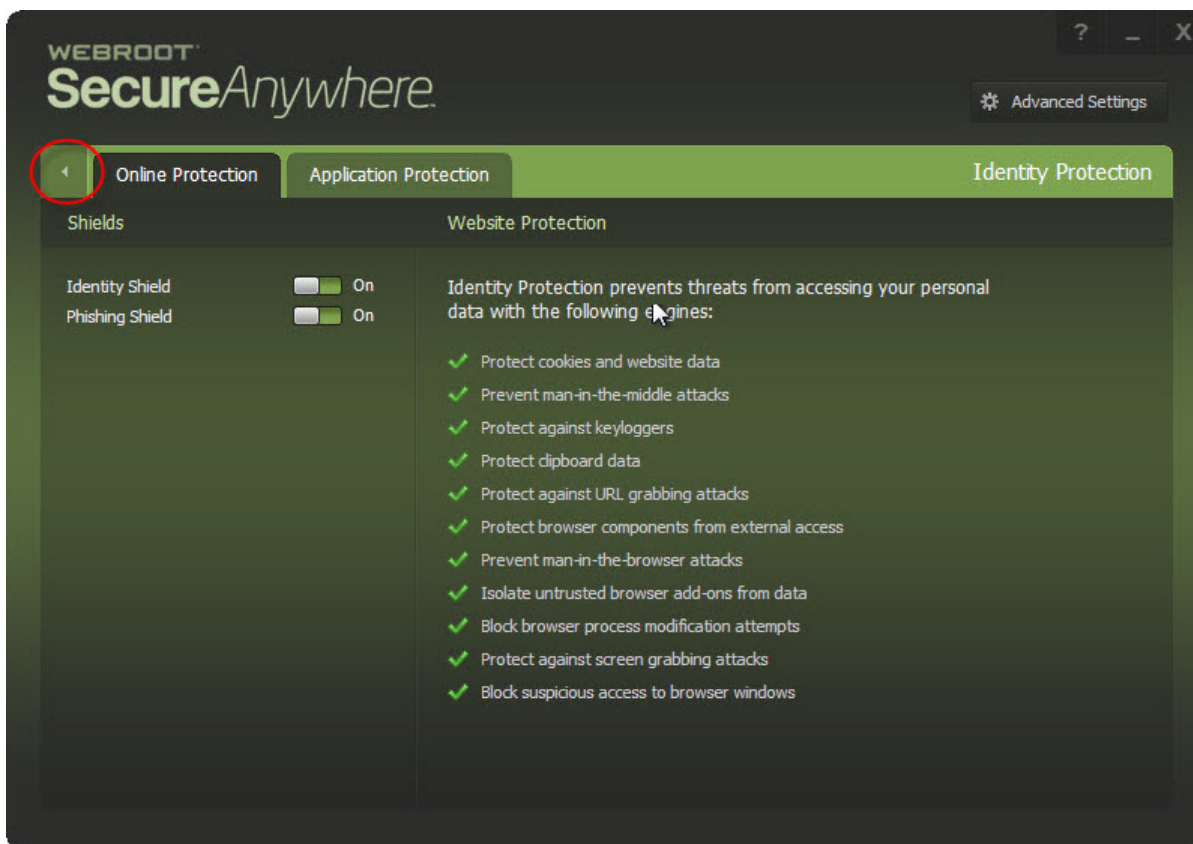


The buttons turn green and the interface turns green and black, indicating that the shields are on.

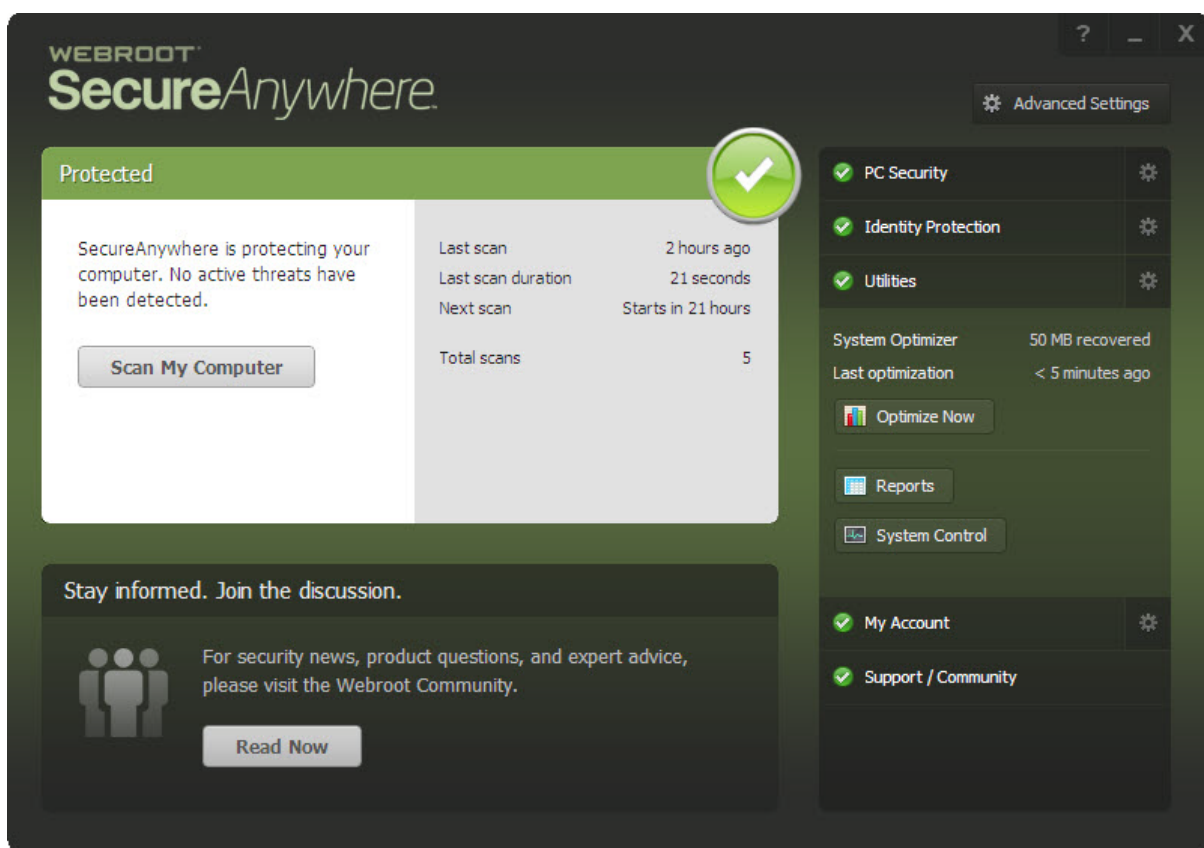




5. When you're done, click the **Back** arrow to return to the main interface.



The main interface displays.



# Chapter 4: Managing Your Account

To manage your account, see the following topics:

---

<b>Viewing Your Account Details .....</b>	<b>59</b>
<b>Shutting Down Identity Shield .....</b>	<b>66</b>
<b>Uninstalling Identity Shield .....</b>	<b>69</b>
<b>Upgrading to a Threat Removal Version .....</b>	<b>70</b>

---

## Viewing Your Account Details

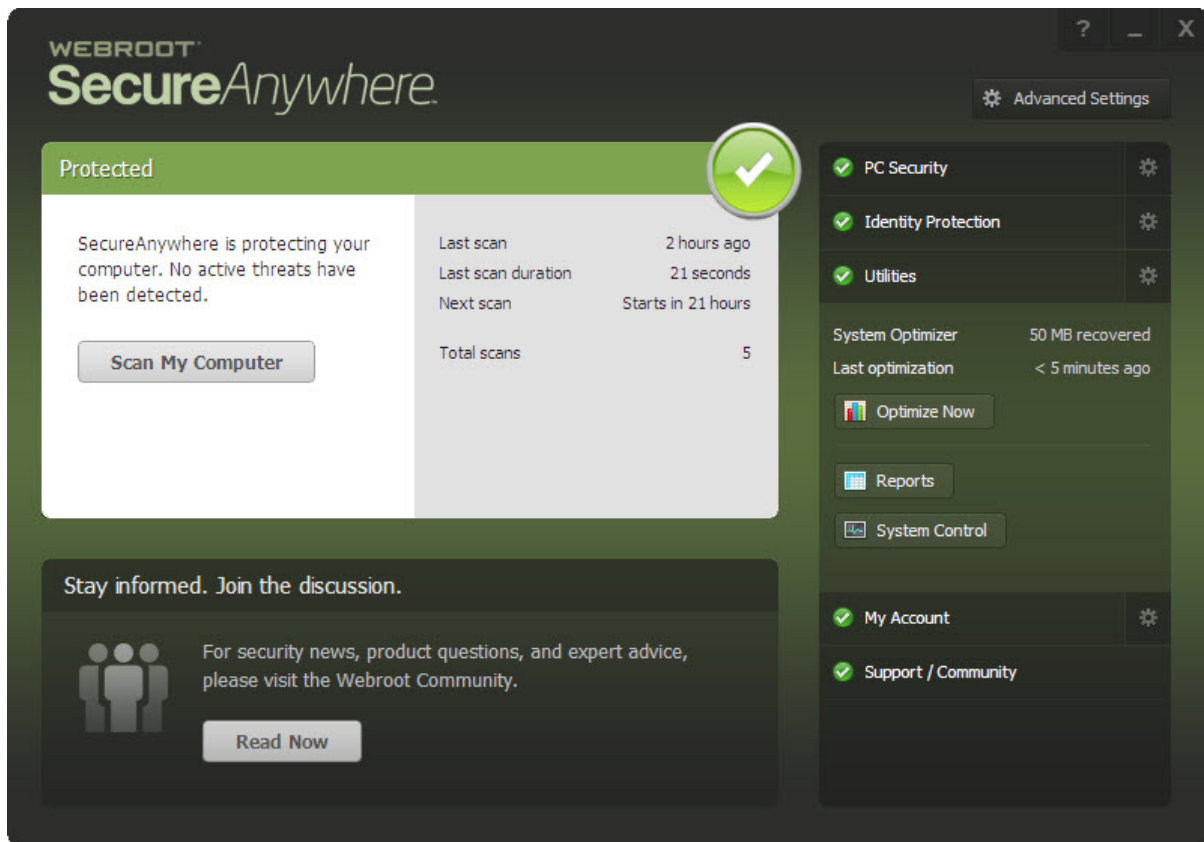
You can view your keycode and the time remaining on your subscription from the My Account window.

**To view account details:**

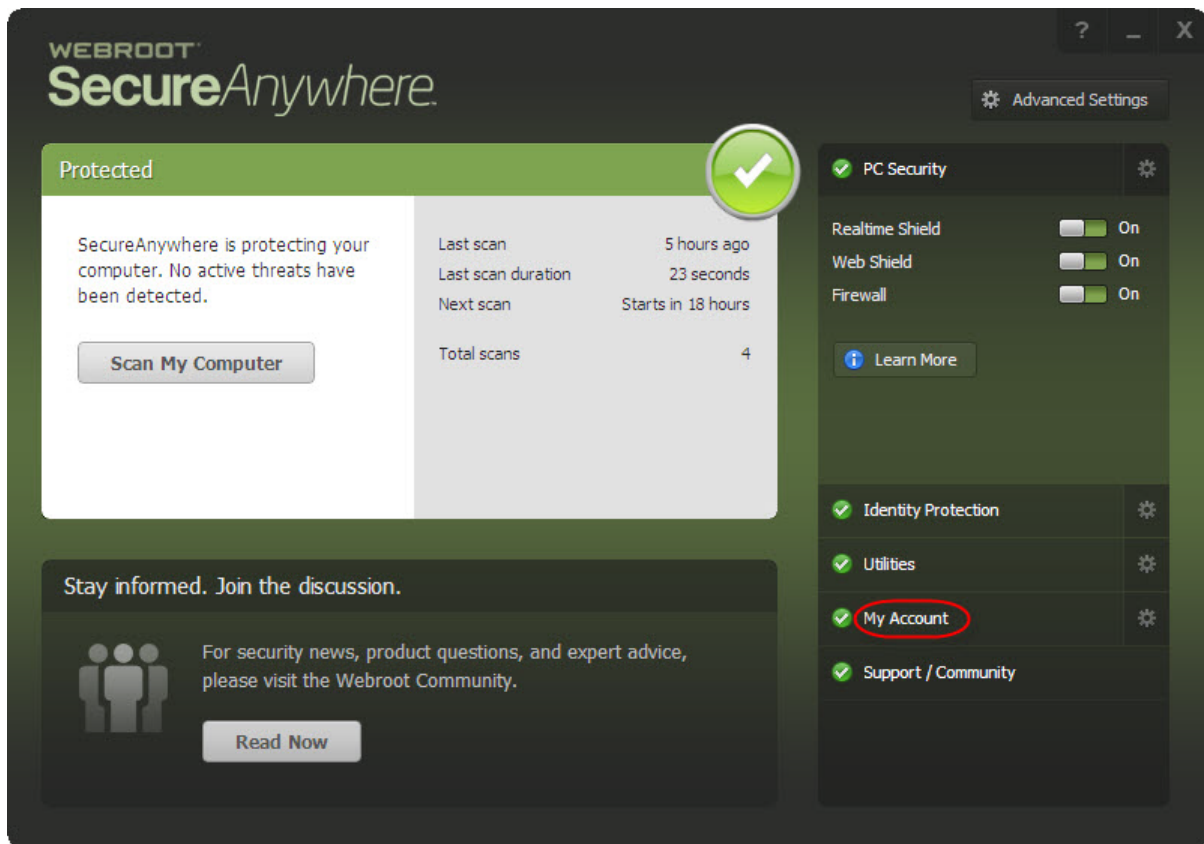
1. From the system tray, double-click the **Webroot** icon to display the main interface.



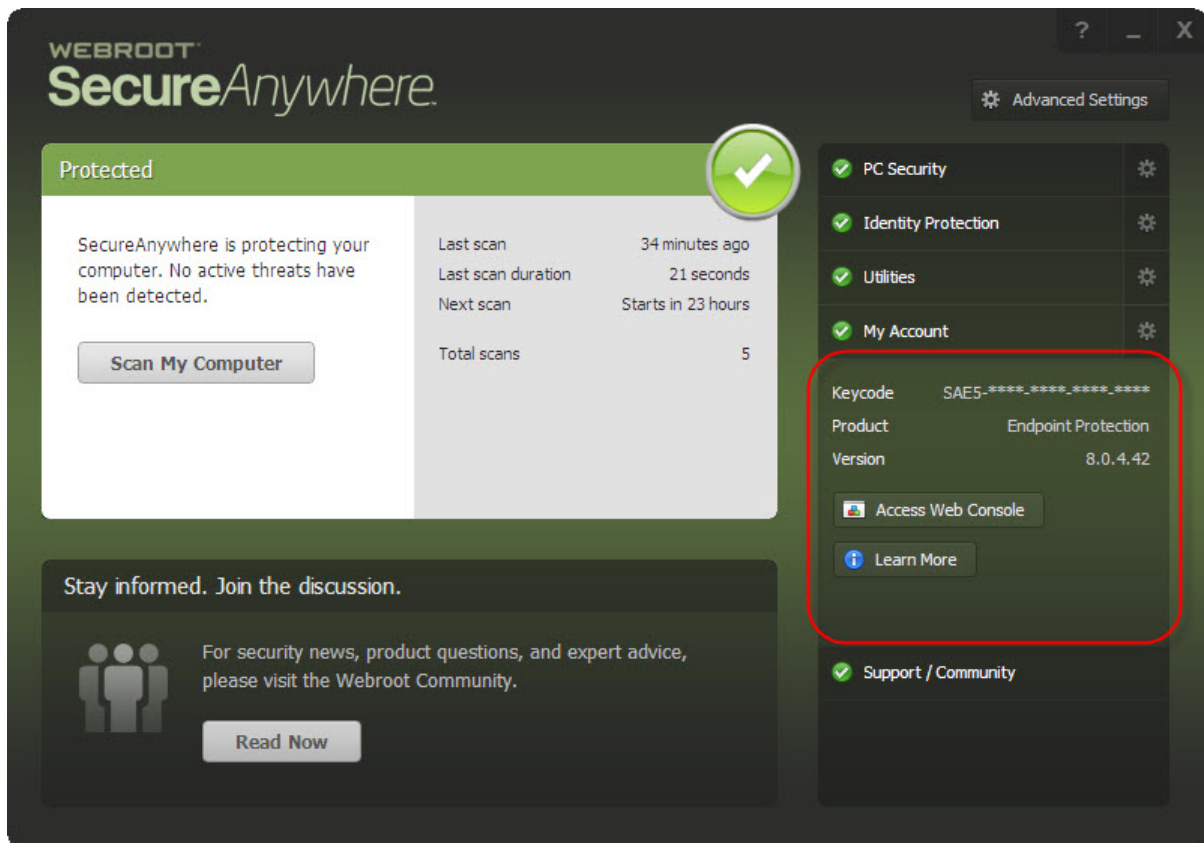
The main interface displays.



2. Click the **My Account** link.



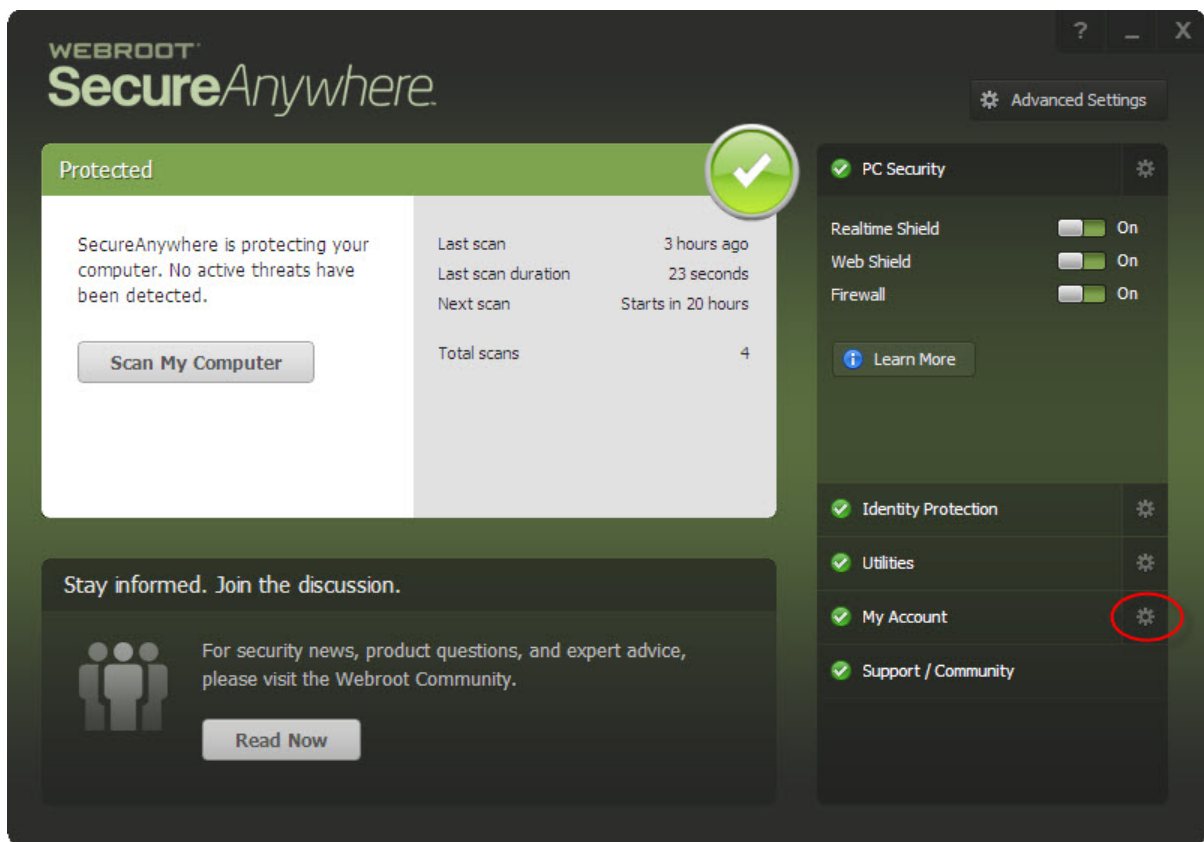
The My Account area displays, with your account information.



The My Account area has the following information:

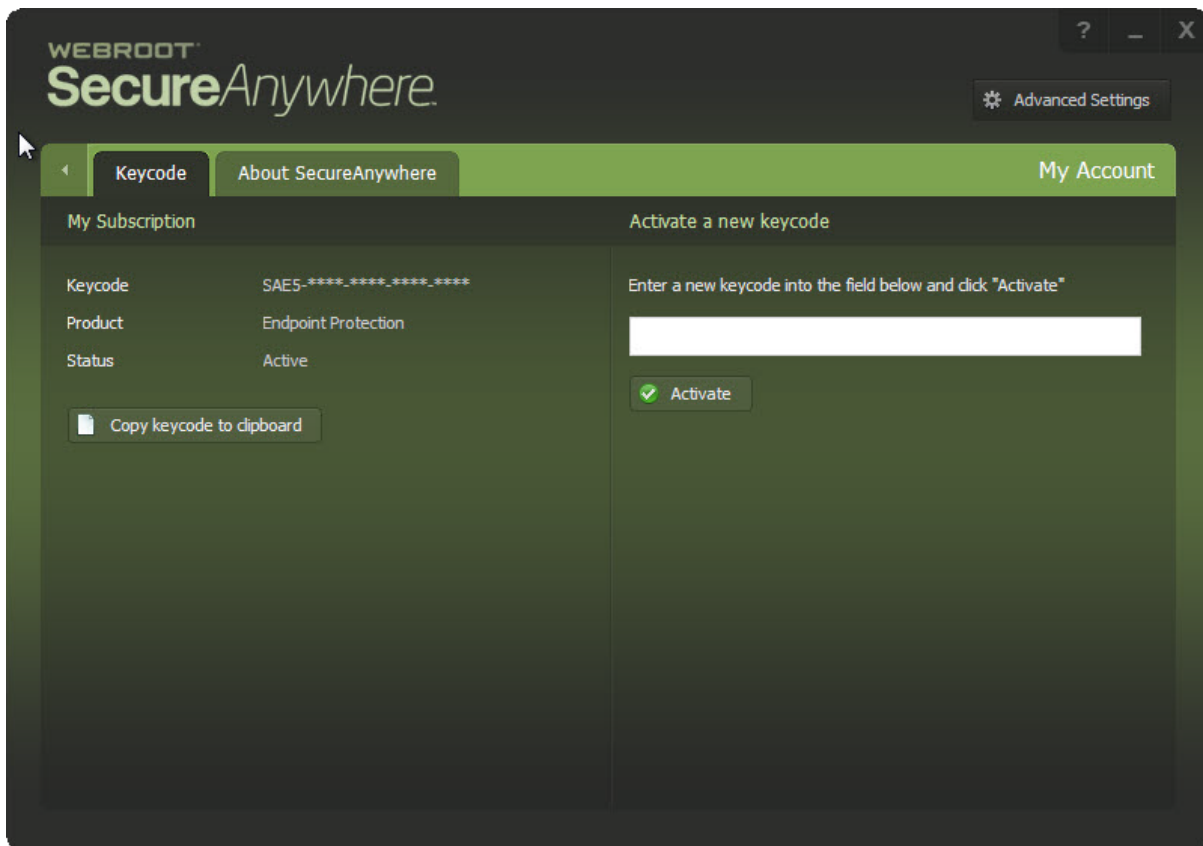
- **Keycode** – This is your keycode; the numbers are blocked out based on your security settings.
  - **Product Name** – This is the name of the product you purchased.
  - **Product Version Number** – This is the version number of the product you purchased.
3. In the My Account area, click either of the following buttons, as needed:
- **Activate a New Keycode** – Displays the Webroot SecureAnywhere online console, where you can create an account that allows you to manage your security across multiple devices.
  - **Learn More** – Displays the Webroot SecureAnywhere Customer webpage where you can read about security features of Webroot SecureAnywhere functionality.

4. To view additional account information, click the **My Account** gear icon.



The My Account interface displays.

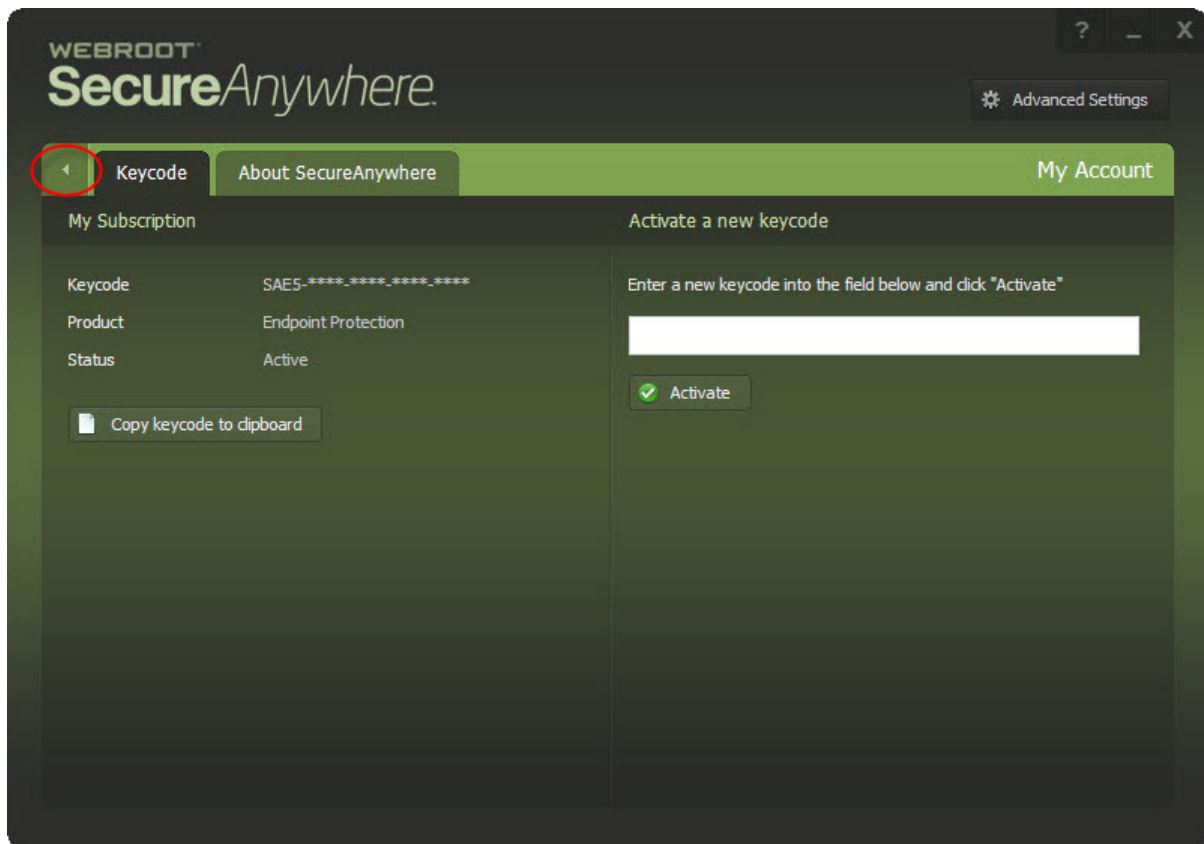




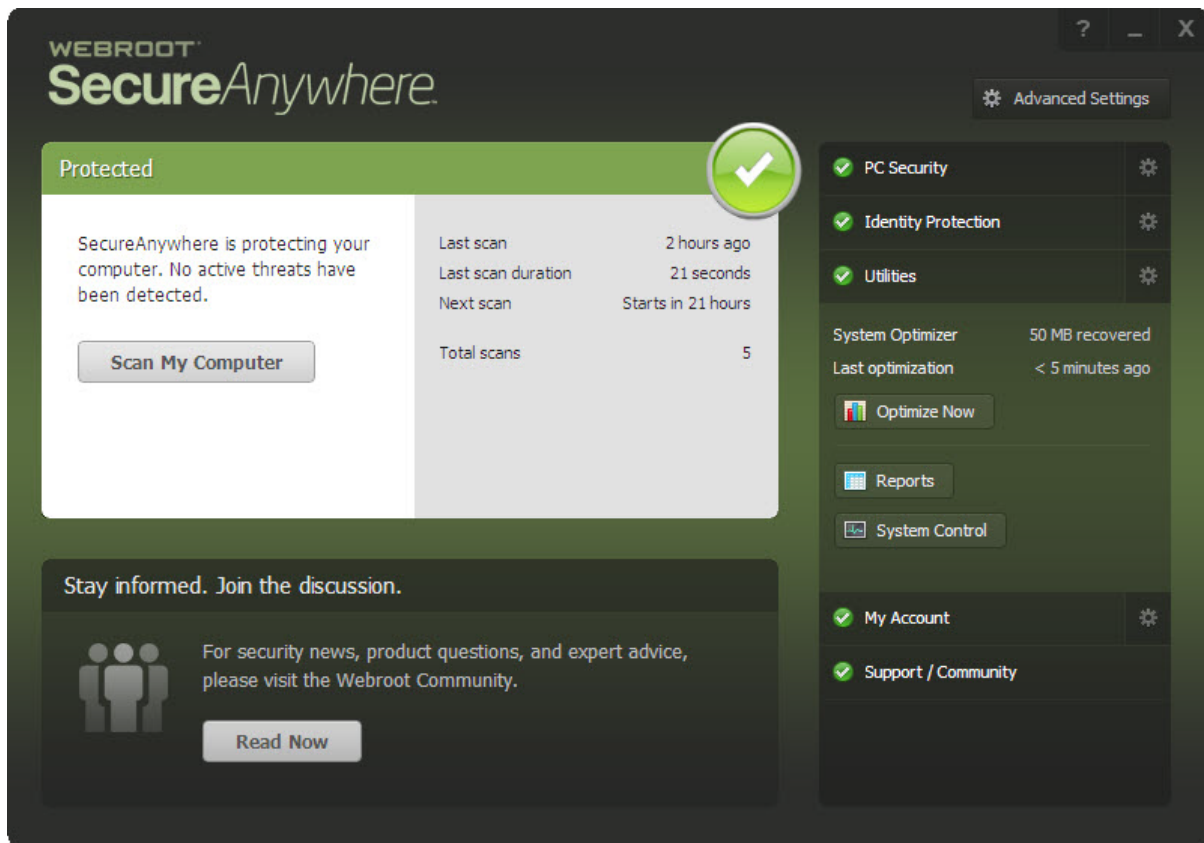
The My Account interface has the following information:

- **Keycode** — This is your keycode; the numbers are blocked out based on your security settings.
  - **Product Name** – This is the name of the product you purchased.
  - **Status** – This is the status of the product you purchased.
5. From here, you can do any of the following:
- Activate a New Keycode. For more information, see [Creating Webroot Accounts](#) in the [WSA PC User Guide](#)
  - Check for Software Updates. For more information, see [Checking For Updates](#) in the [WSA PC User Guide](#).

- When you're done viewing your account details, click the **Back** arrow to return to the main interface.



The main interface displays.



## Shutting Down Identity Shield

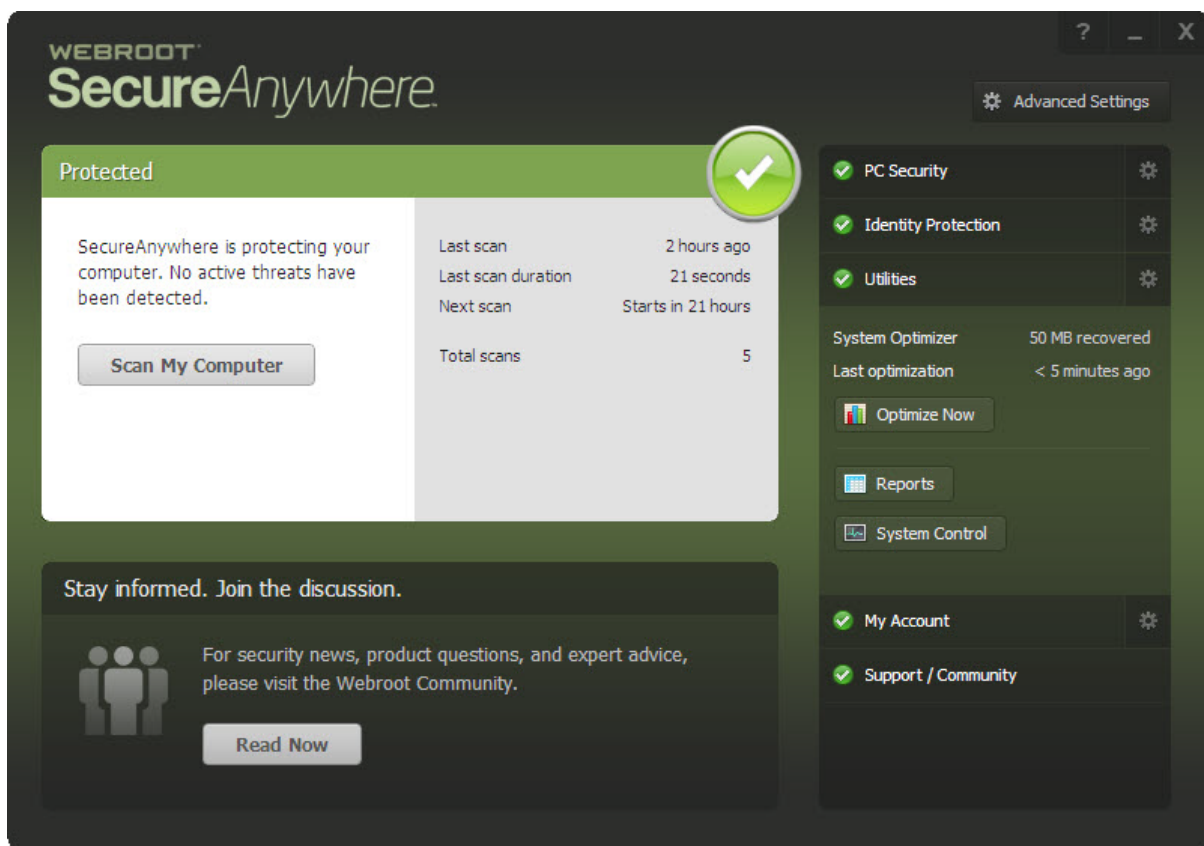
You can temporarily shut down Identity Shield protection or uninstall the program entirely, as described below. We recommend that you keep Identity Shield running in the background at all times; normally, you do not need to shut it down.

### To shut down Identity Shield:

1. From the system tray, double-click the **Webroot** icon to display the main interface.



The main interface displays.

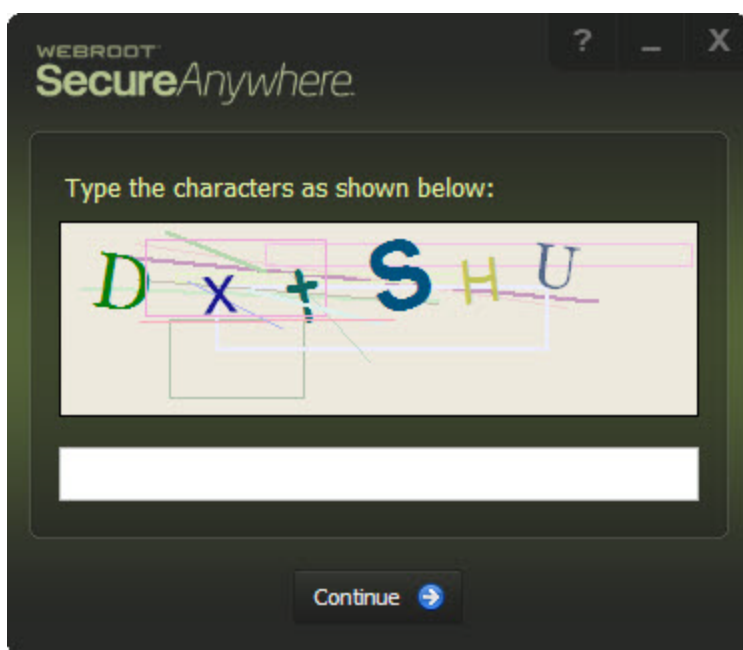


2. Click the **Shut down Protection** button.

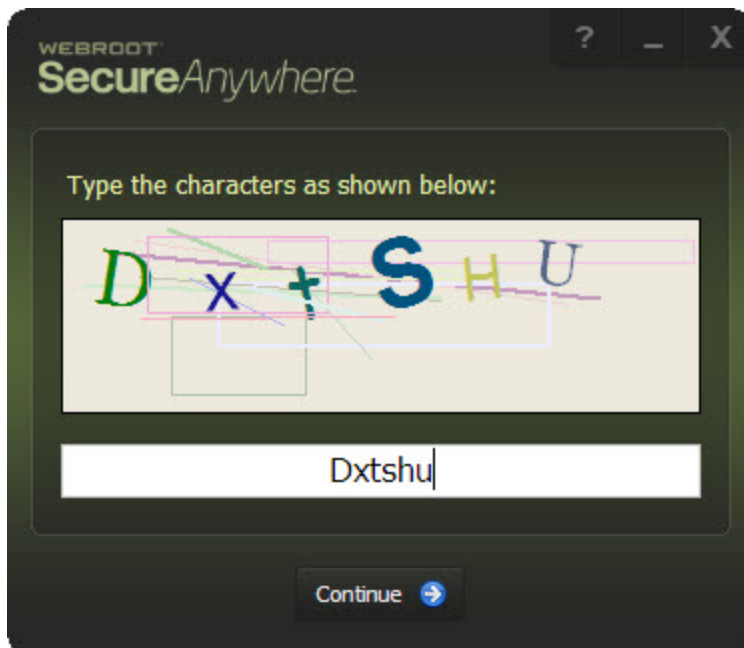
A prompt displays.

3. At the prompt, click the **Yes** button.

A CAPTCHA dialog window displays.



4. Enter the displayed characters and click the **Enter** button.



The Identity Shield stops its protection activities and the Webroot icon is removed from the system tray.

5. To turn Identity Shield back on, from the Windows Start menu, select **All Programs > Webroot SecureAnywhere > Webroot SecureAnywhere**.
-

## Uninstalling Identity Shield

If needed, you can uninstall Identity Shield completely.

### To uninstall Identity Shield:

1. From the Windows start menu, select **All Programs > Webroot SecureAnywhere**.

The Webroot SecureAnywhere interface displays.

2. Select **Tools**.
  3. Click **Uninstall Webroot**.
  4. At the prompt, click **Yes** to continue.
-

## Upgrading to a Threat Removal Version

To block and remove malware from your computer, you can upgrade to one of the following SecureAnywhere version:

- [AntiVirus](#) — Provides protection from viruses and spyware, and also includes Identity Shield and firewall protection.
- [Internet Security Plus](#) — Provides all the features of the AntiVirus edition, plus password management and protection for mobile devices.
- [Complete](#) — Provides all the features of Internet Security Plus edition, as well as backup management and a system cleaner that removes temporary files and your browsing history.

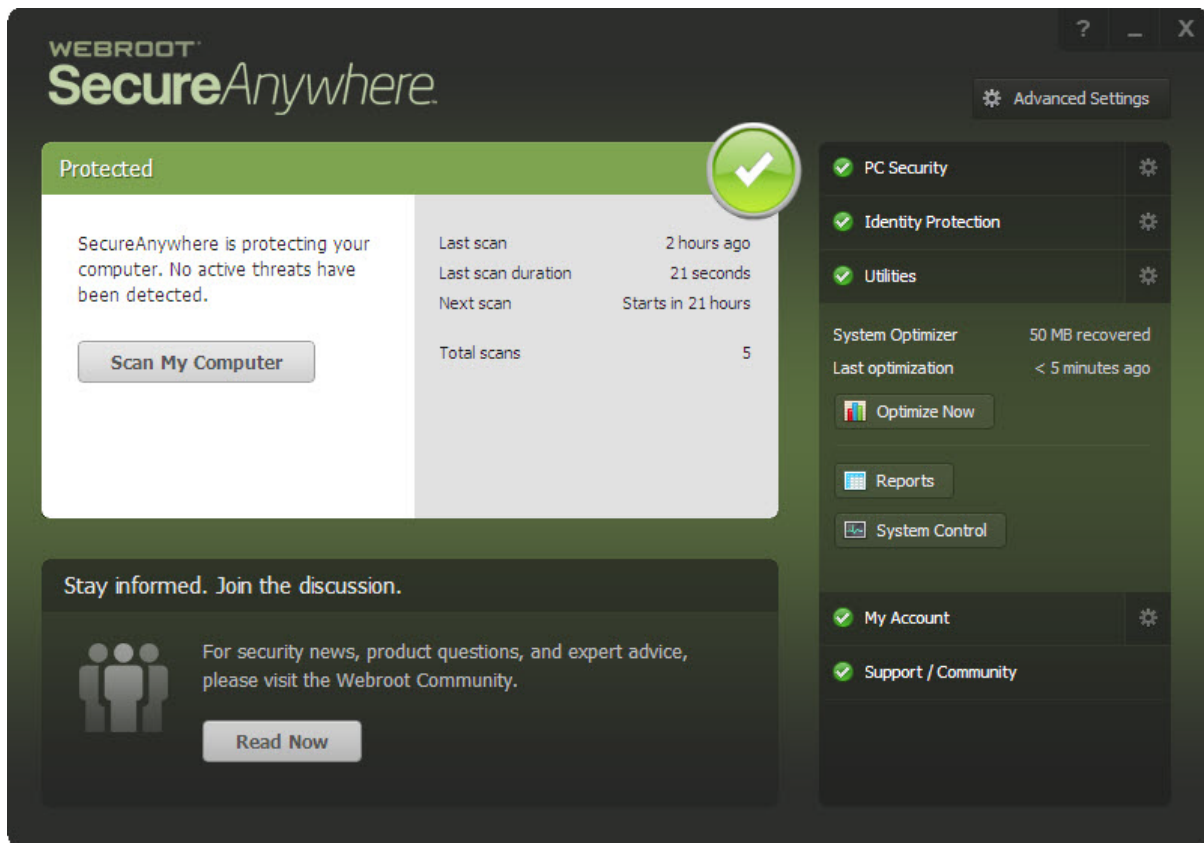
### To upgrade your version:

1. From the system tray, double-click the **Webroot** icon to display the main interface.



The main interface displays.





2. Click on the **Upgrade Now** link.
3. If you don't see this link on the Overview window, click the **My Account** tab and then the **Upgrade** or **Renew** link.
4. When the Webroot website opens, you can purchase an upgrade to your software.

# Chapter 5: Identity Shield Support

To access support, see the following topic:

---

<b>Accessing Technical Support .....</b>	<b>73</b>
--	-----------

---

## Accessing Technical Support

Webroot offers a variety of support options. You can do any of the following:

- [Is your Webroot subscription through Best Buy? Click here for additional support options.](#)
  - [Look for the answer in our knowledge base and FAQs.](#)
  - [Look for the answer in our online documentation.](#)
  - [Enter a help ticket.](#)
  - [Connect to the Webroot Security for Android forum.](#)
-



# Index

---

## A

- account details, viewing 59
- activating keycodes 61
- alerts
  - malware 28
  - responding to 13
- allowing
  - applications 36
  - trusted screen capture programs 28
- applications
  - allowing 36
  - denying 36
  - protecting 36
- applying
  - updates 17

## B

- basic configuration settings 14
- blocking
  - browser modifications 47
  - suspicious access 47
  - third party cookies 27
- browser
  - components, protecting 46
  - modifications, blocking 47

## C

- changing
  - Identity Shield settings 25
  - language settings 6
  - protection levels 10
- clipboard data, protecting 46
- configuration settings 14
- cookies
  - protecting 46
- creating
  - shortcut 6

## D

- denying
  - applications 36
- description
  - identity shield 11
  - main interface 11
  - my account 12
  - Support Community 12
  - utilities 11
- disabling Identity Shield 50
- DNS IP resolution, verifying 27
- download
  - updates 17

## I

- identity protection description 11
- Identity Shield
  - disabling 50
  - overview 2
  - settings, changing 25
  - shutting down 66
  - uninstalling 69
  - upgrading 70
- installation 4
- isolating untrusted browser add-ons 47

## K

- keycode 61
- keycodes, activating 61
- keyloggers, protecting against 46

## L

- language settings
  - changing 6

## M

- main interface, description 11
- malware
  - alerts 28
- man-in-the-browser attacks
  - protecting against 47

- man-in-the-middle attacks
  - preventing 46
- managing
  - protected applications 29
  - protected websites 42
- my account description 12

## O

- overview, Identity Shield 2

## P

- PC security description 11
- preventing
  - access 27
  - man-in-the-middle attacks 46
- product
  - keycode 61
  - name 61
  - version number 61
- protect
  - cookies 46
  - saved data 46
- protected
  - applications, managing 29
  - websites, managing 42
- protecting
  - against keyloggers 46
  - against man-in-the-browser attacks 47
  - against screen-grabbing attacks 47
  - against URL grabbing attacks 46
  - browser components 46
  - clipboard data 46
- protection
  - levels, changing 10
  - options 45

## S

- saved data, protecting 46
- screen-grabbing attacks, protecting against 47
- security levels 45
- settings
  - changing basic 14
- shortcut, creating 17

- show
  - start menu shortcut 17
  - status notificaton 17
  - system tray icon 17
- shut down SecureAnywhere manually 17
- shutting down Identity Shield 66
- start menu shortcut, show 17
- status 63
  - notification, show 17
- Support Community description 12
- suspicious access, blocking 47
- system requirements 4
- system tray icon, show 17

## T

- third party cookies, blocking 27
- trusted screen capture programs, allowing 28

## U

- uninstalling Identity Shield 69
- untrusted browser add-ons, isolating 47
- updates
  - applying 17
  - downloading 17
- upgrading Identity Shield 70
- URL grabbing attacks, protecting against 46
- utilities, description 11

## V

- verifying
  - DNS IP resolutions 27
  - websites 27
- viewing account details 59

## W

- warnings, responding to 13
- websites, verifying 27